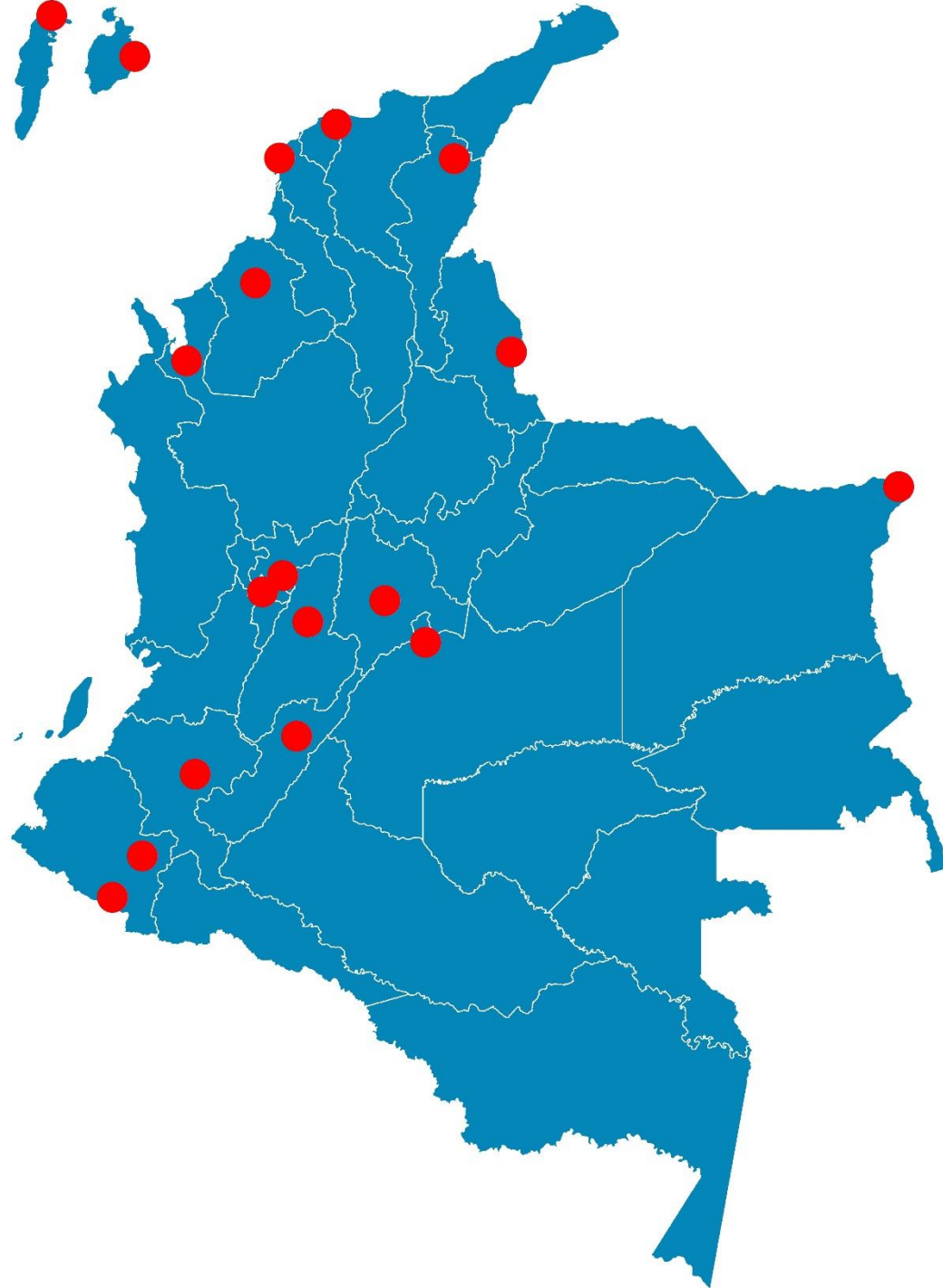


Febrero  
2020



# Boletín Climatológico

Seguimiento Diario  
de las Temperaturas Mínima, Media  
y Máxima

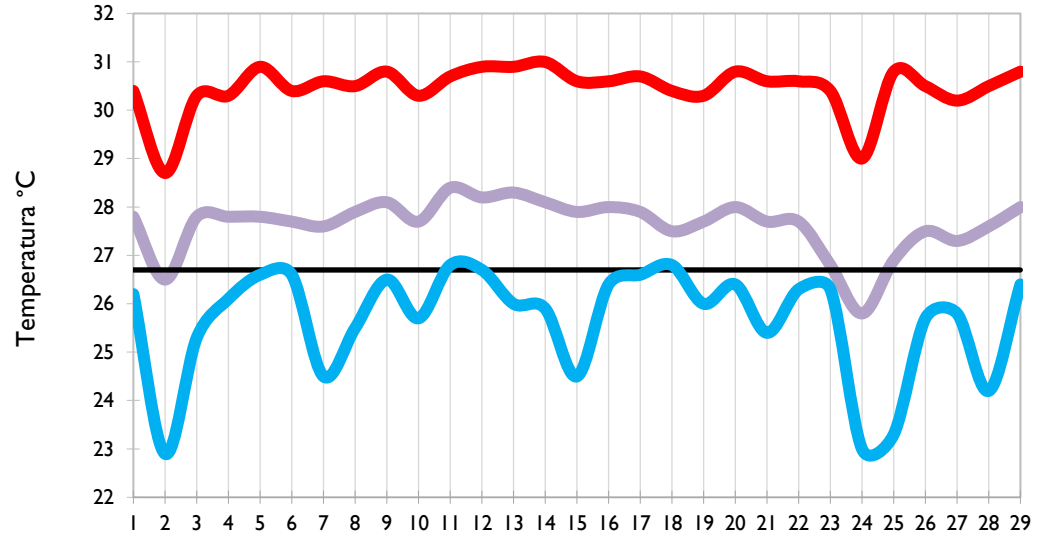
 Estaciones de  
Seguimiento

Temperatura Mínima

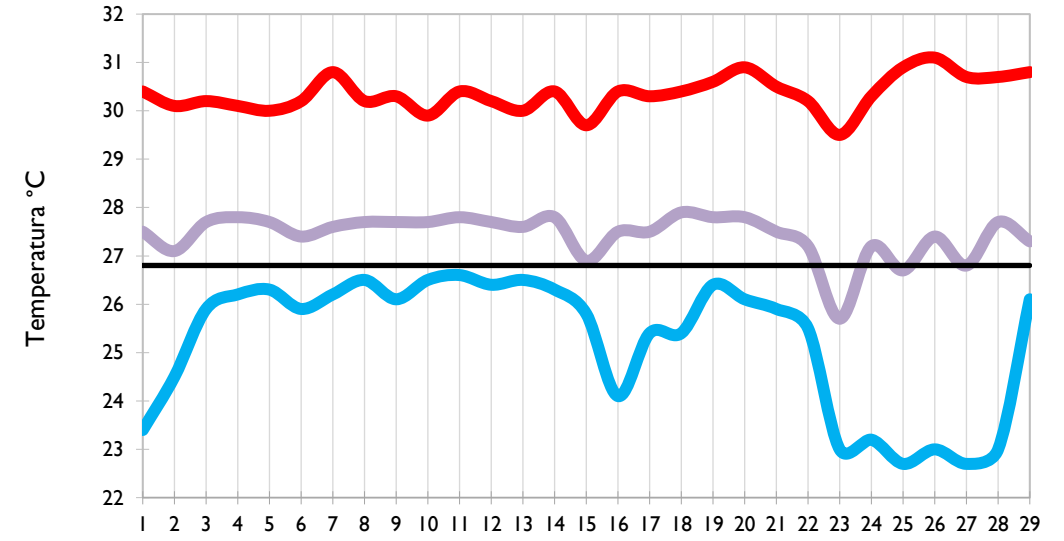
Temperatura Media

Temperatura Máxima

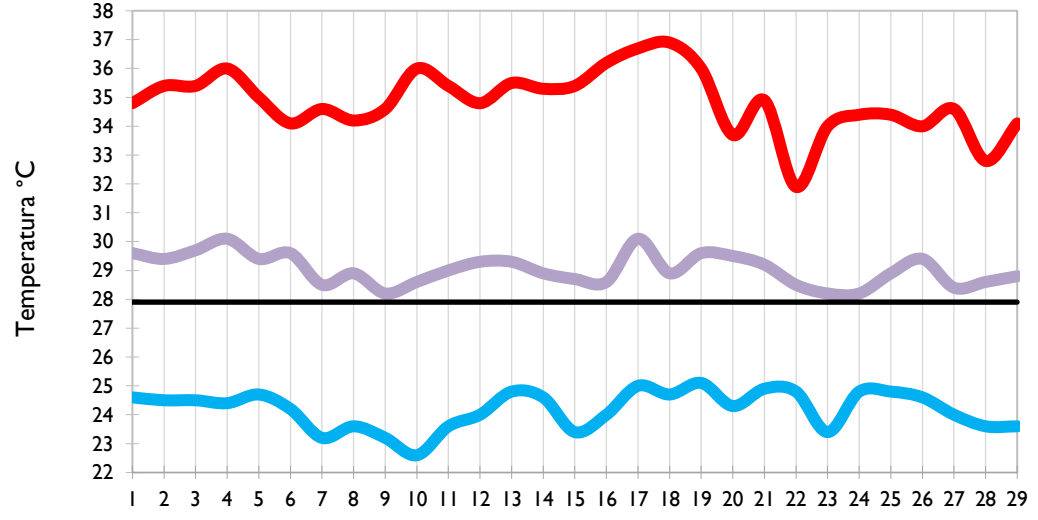
San Andrés - Archipiélago



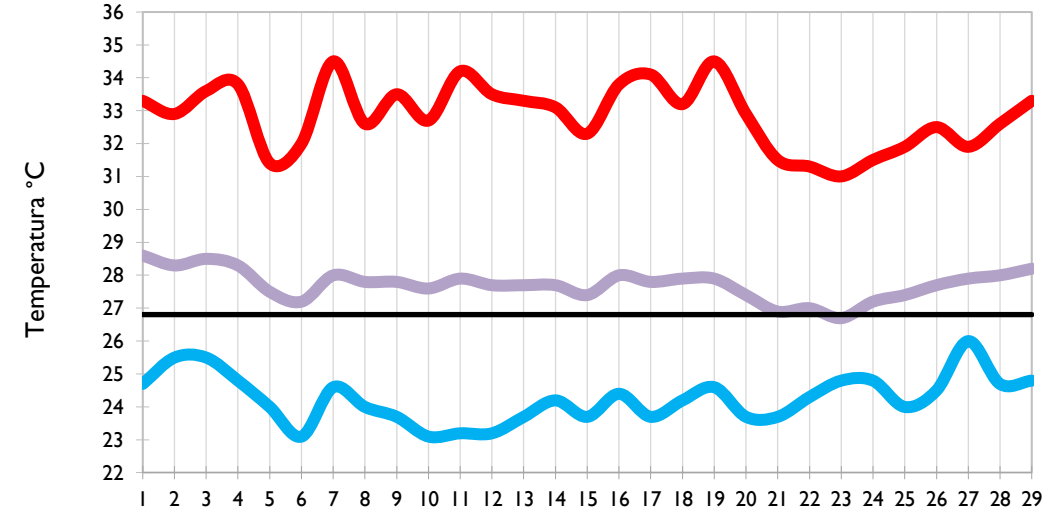
Providencia - Archipiélago



Santa Marta - Magdalena



Cartagena - Bolívar

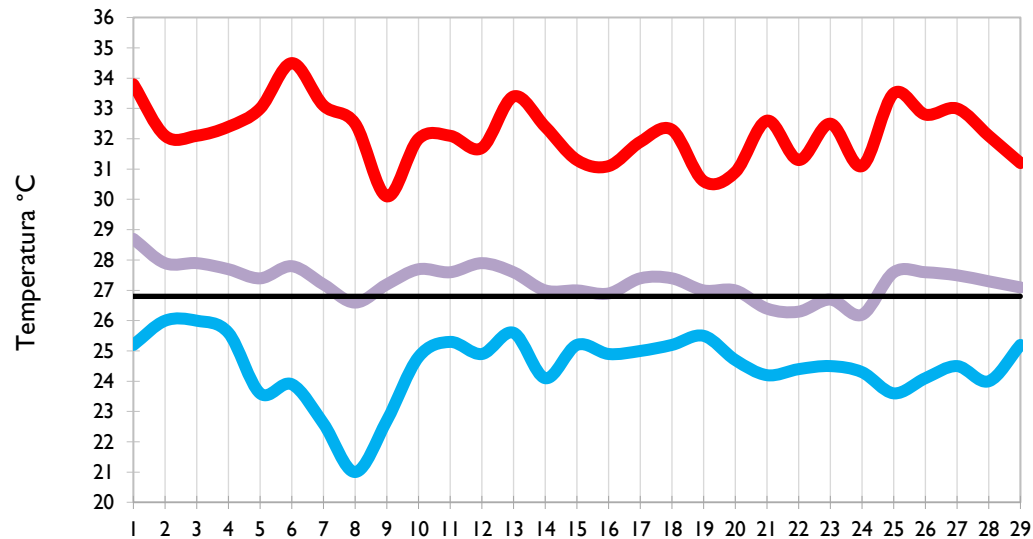


Temperatura Mínima

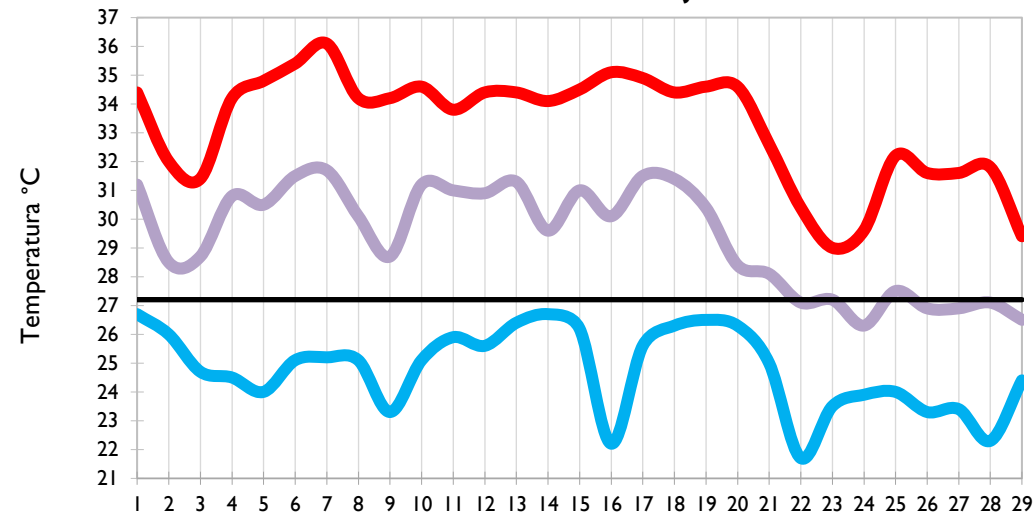
Temperatura Media

Temperatura Máxima

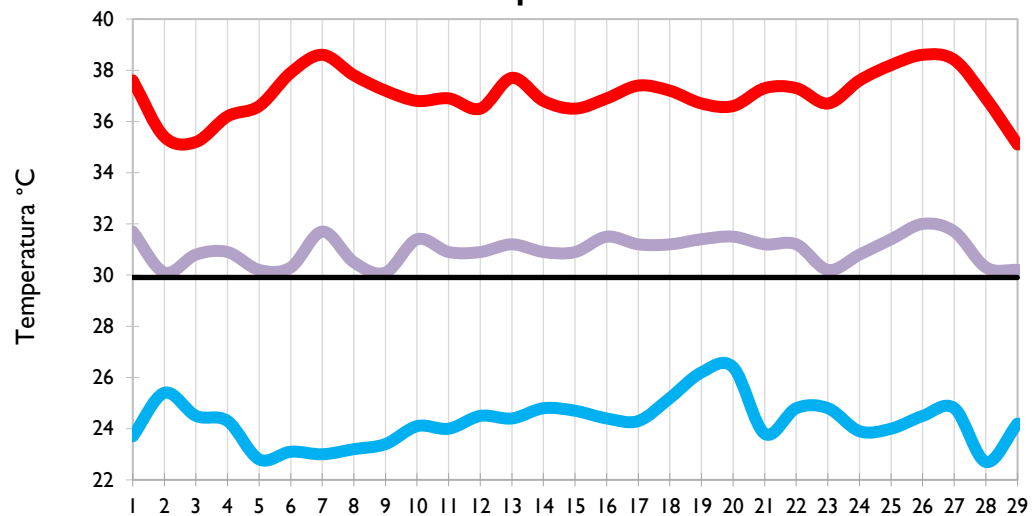
**Soledad - Atlántico**



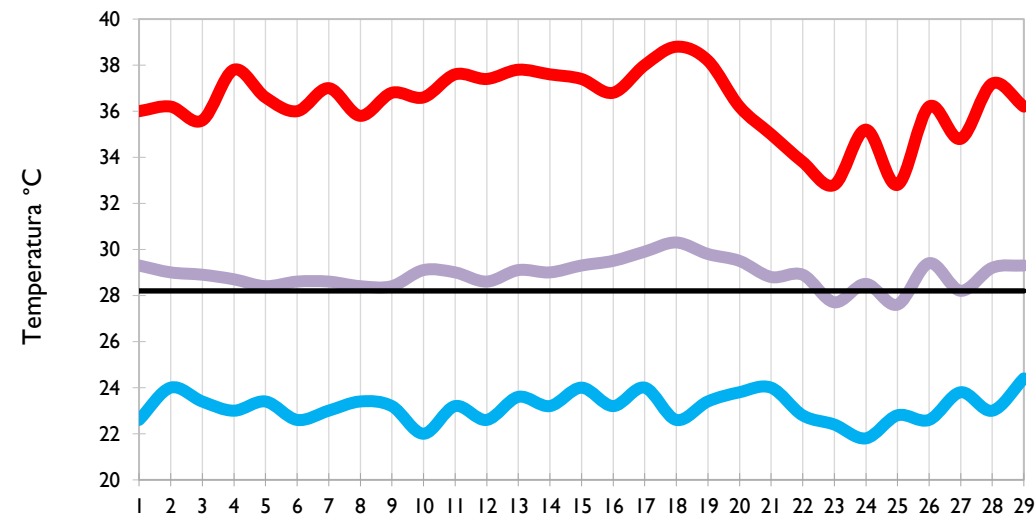
**Riohacha - La Guajira**



**Valledupar - Cesar**



**Montería - Córdoba**

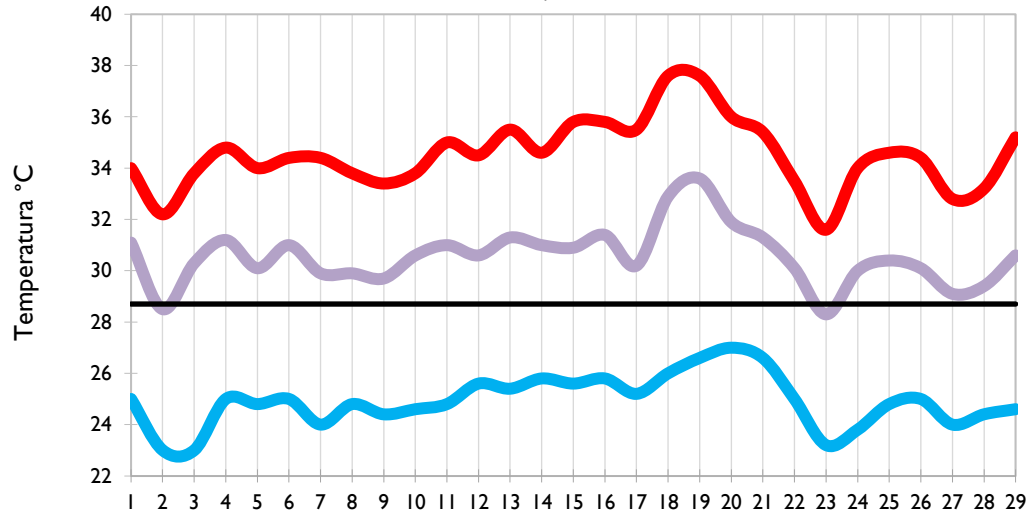


Temperatura Mínima

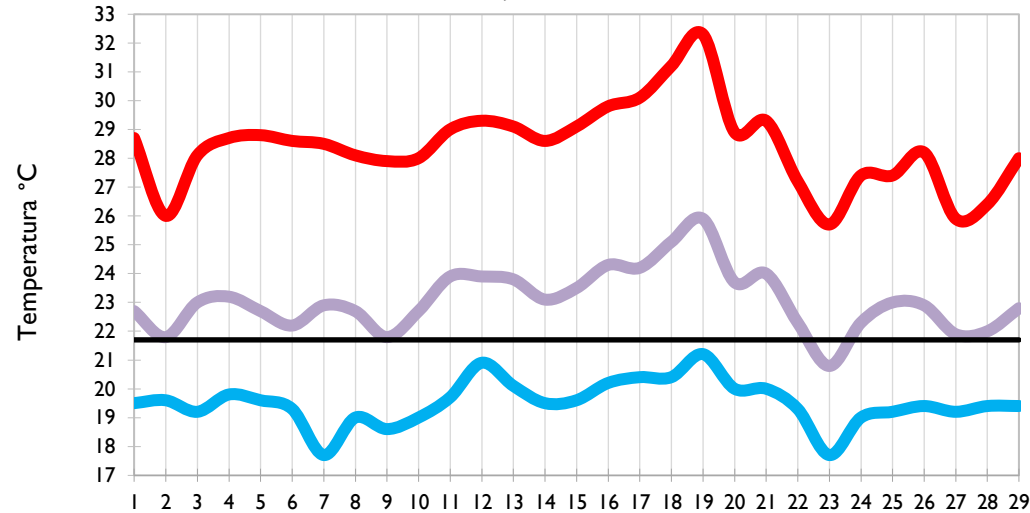
Temperatura Media

Temperatura Máxima

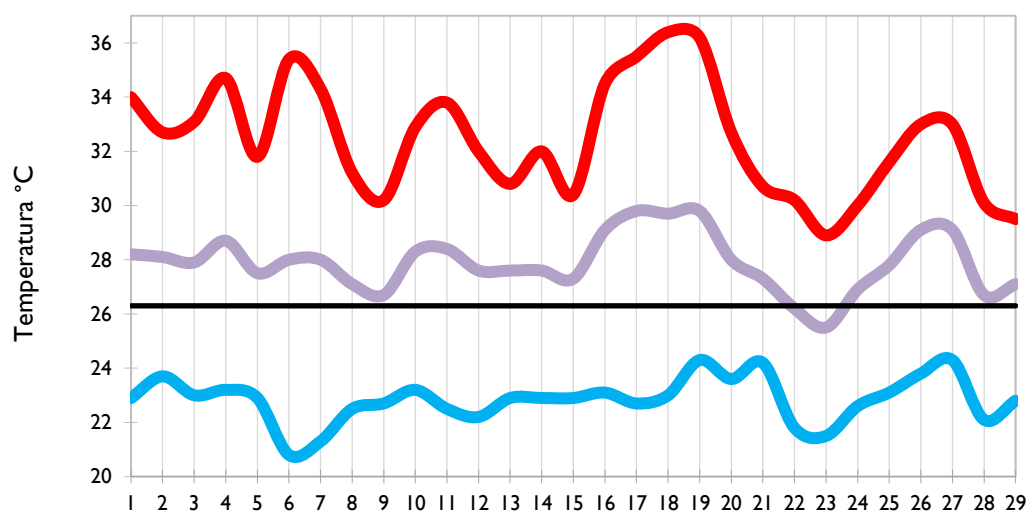
**Barrancabermeja - Santander**



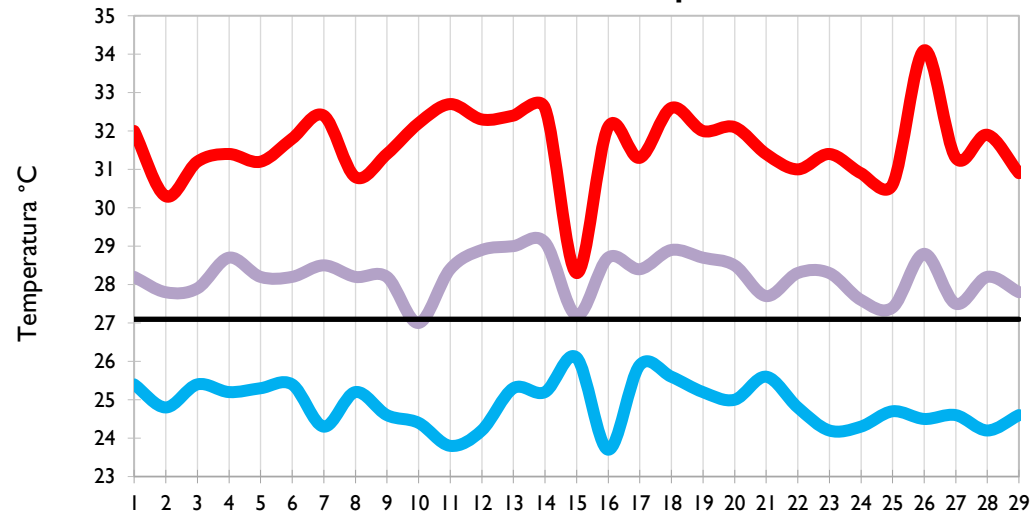
**Lebrija - Santander**



**Cúcuta - Norte de Santander**



**Los Cedros - Antioquia**

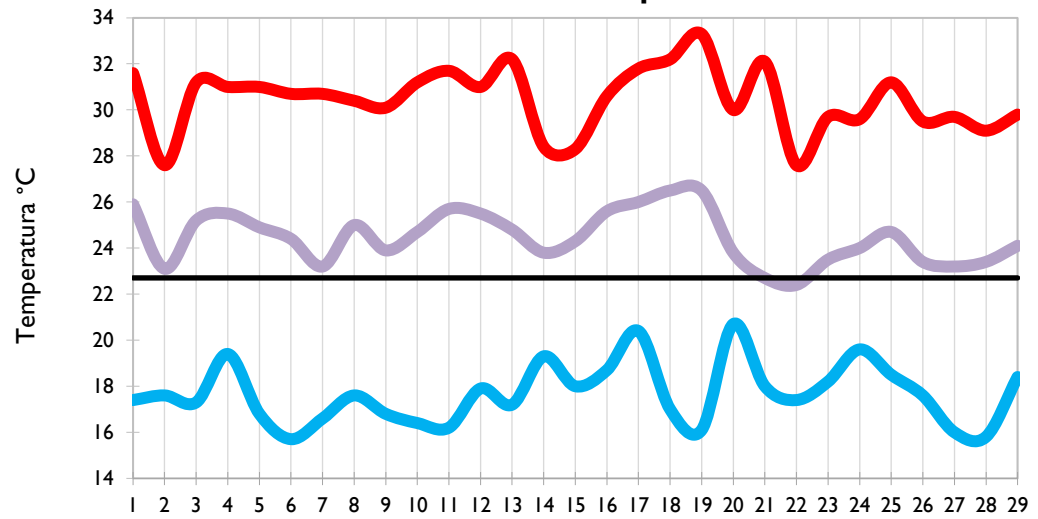


Temperatura Mínima

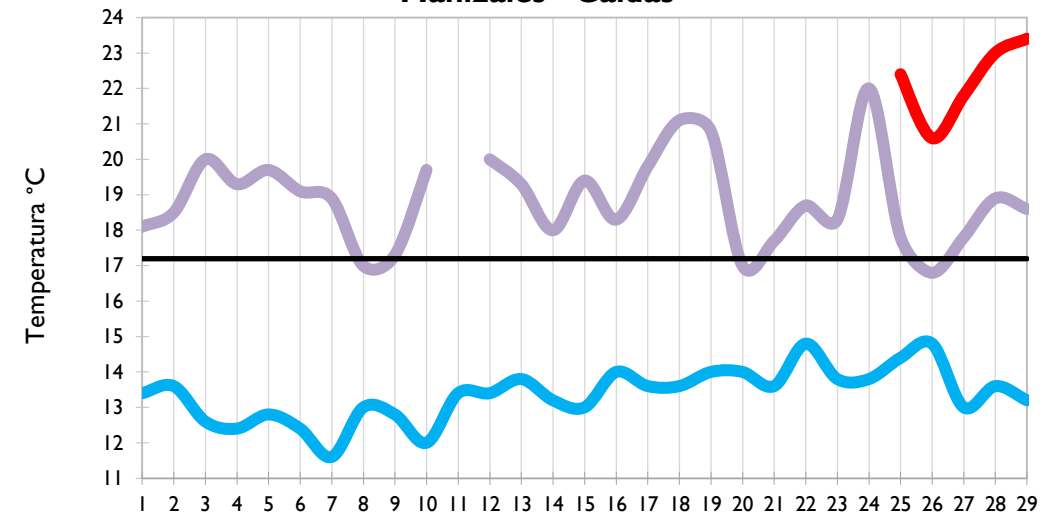
Temperatura Media

Temperatura Máxima

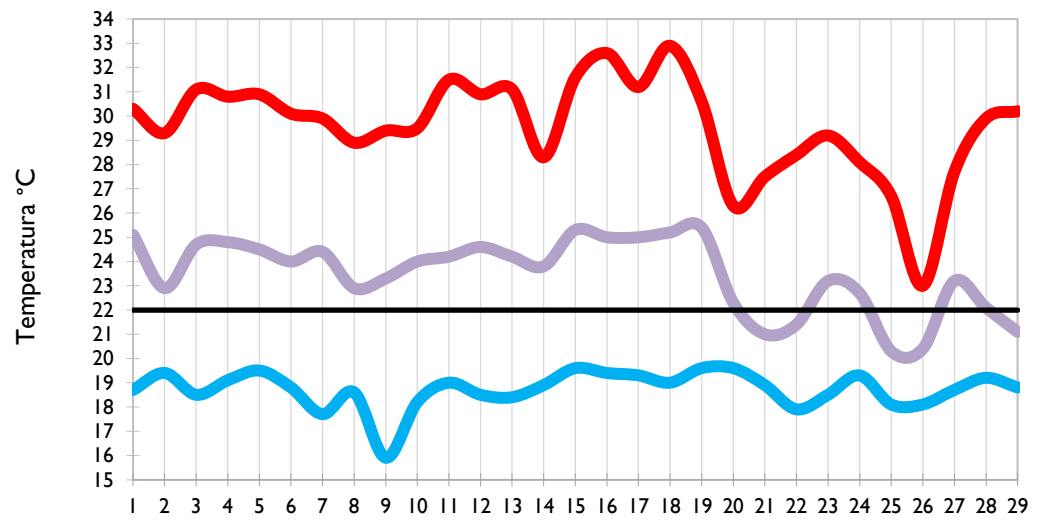
Medellín - Antioquia



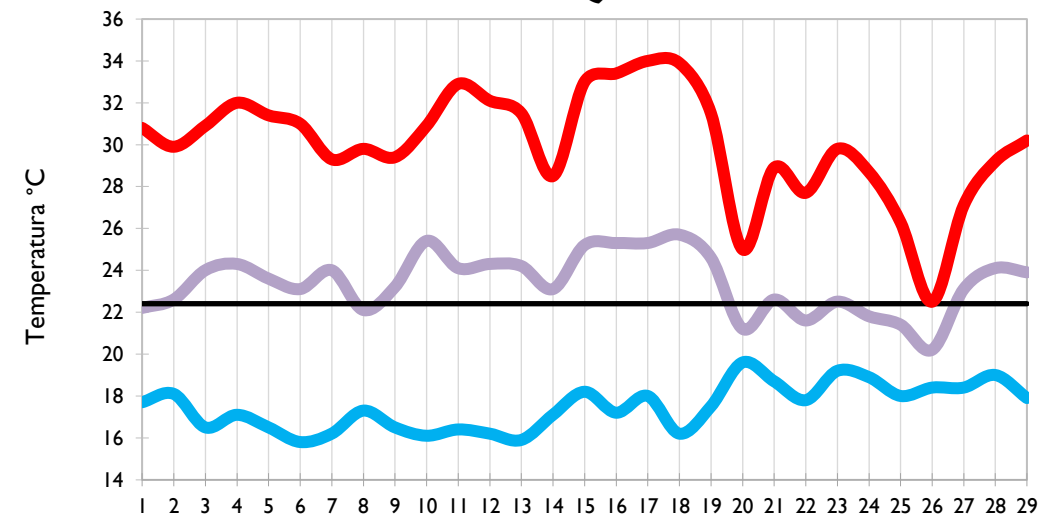
Manizales - Caldas



Pereira - Risaralda



Armenia - Quindío

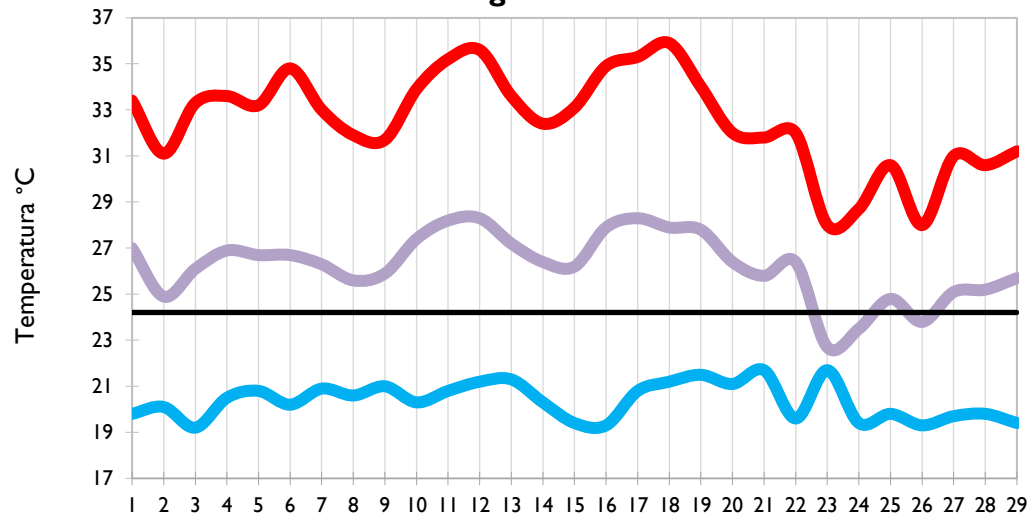


Temperatura Mínima

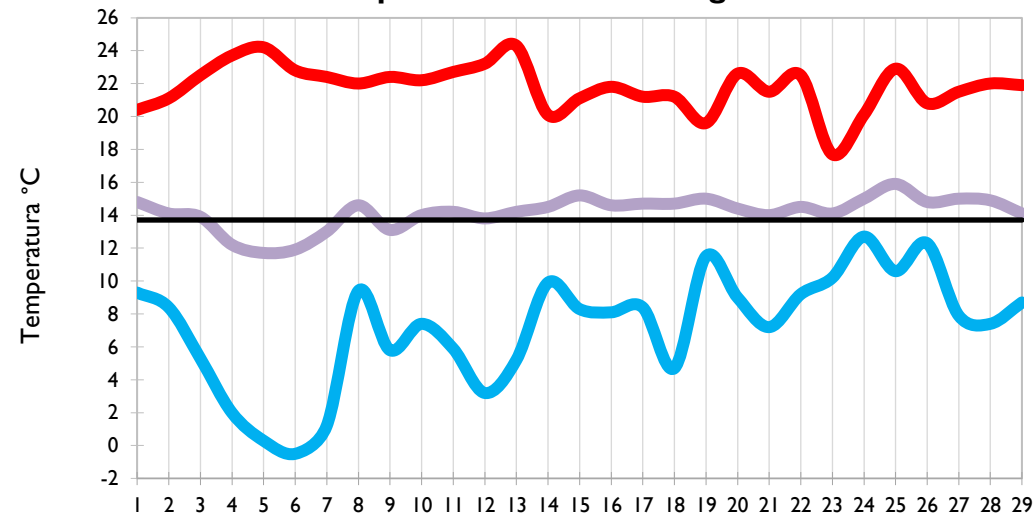
Temperatura Media

Temperatura Máxima

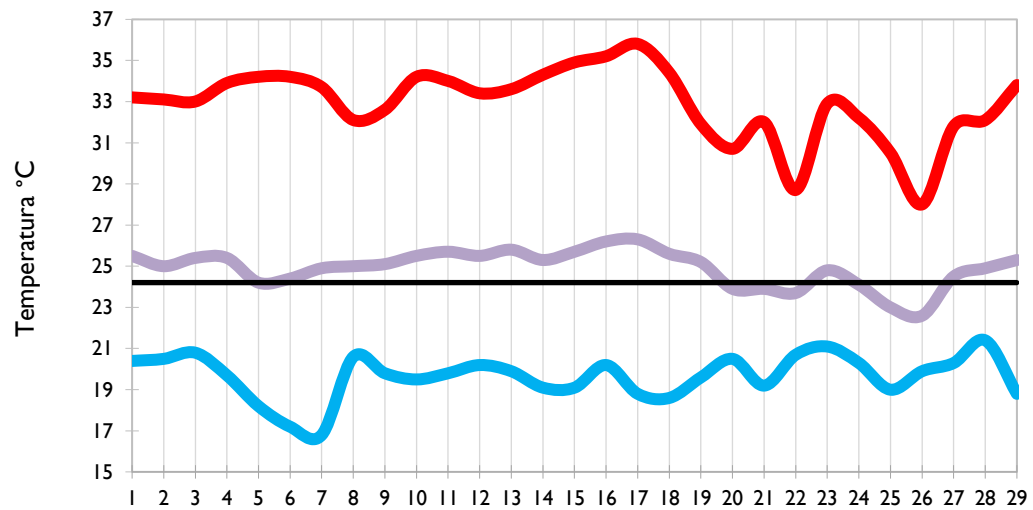
Ibagué - Tolima



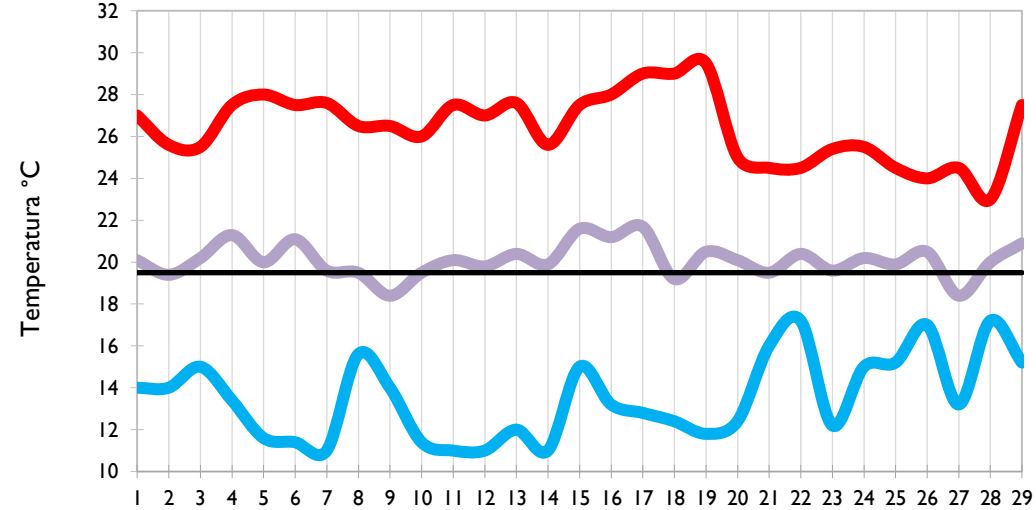
Aeropuerto El Dorado - Bogotá D. C.



Palmira - Valle del Cauca



Popayán - Cauca

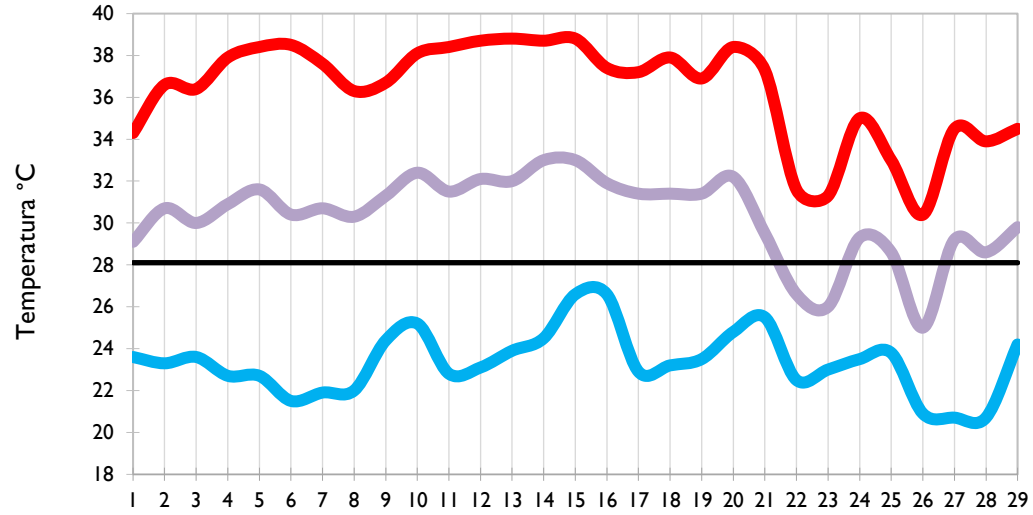


Temperatura Mínima

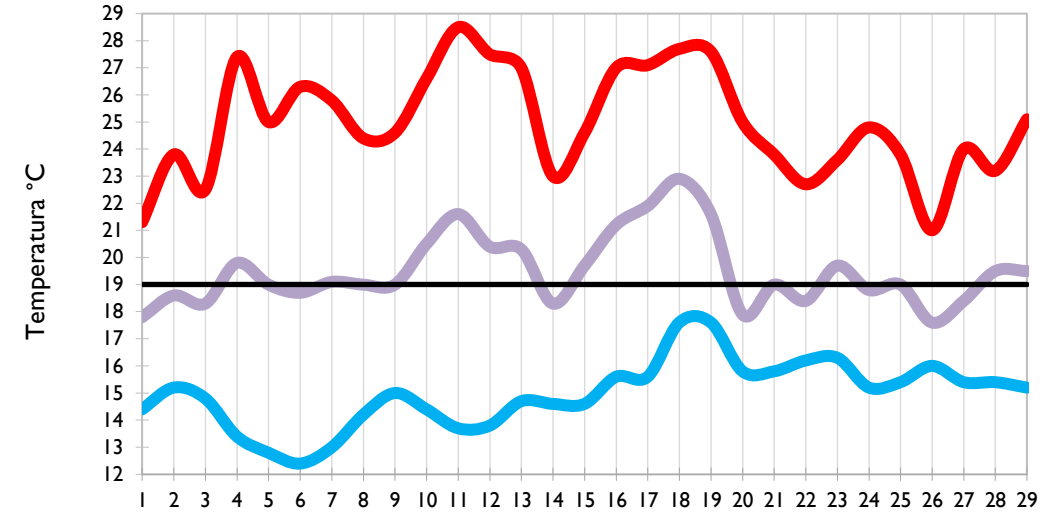
Temperatura Media

Temperatura Máxima

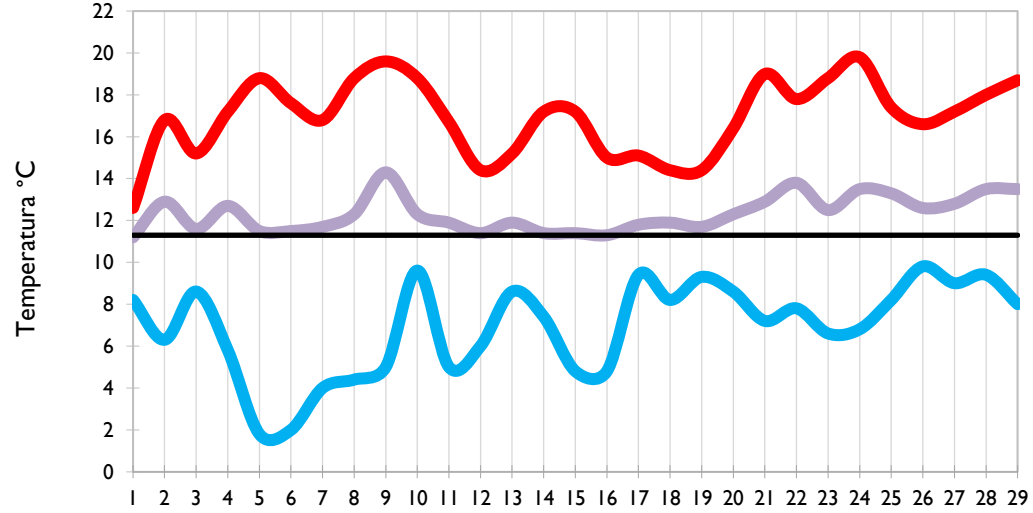
Neiva - Huila



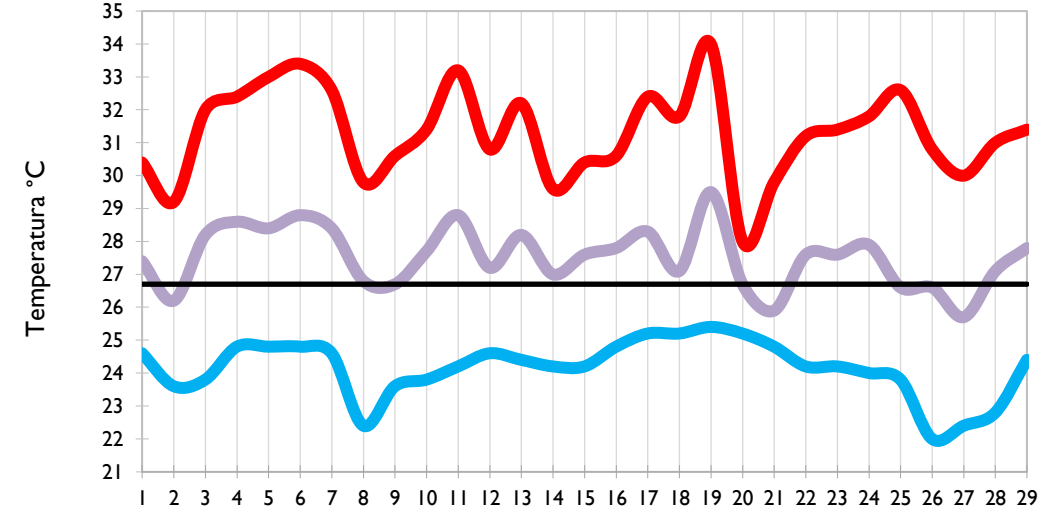
Chachagüi - Nariño



Ipiales - Nariño



Quibdó - Chocó

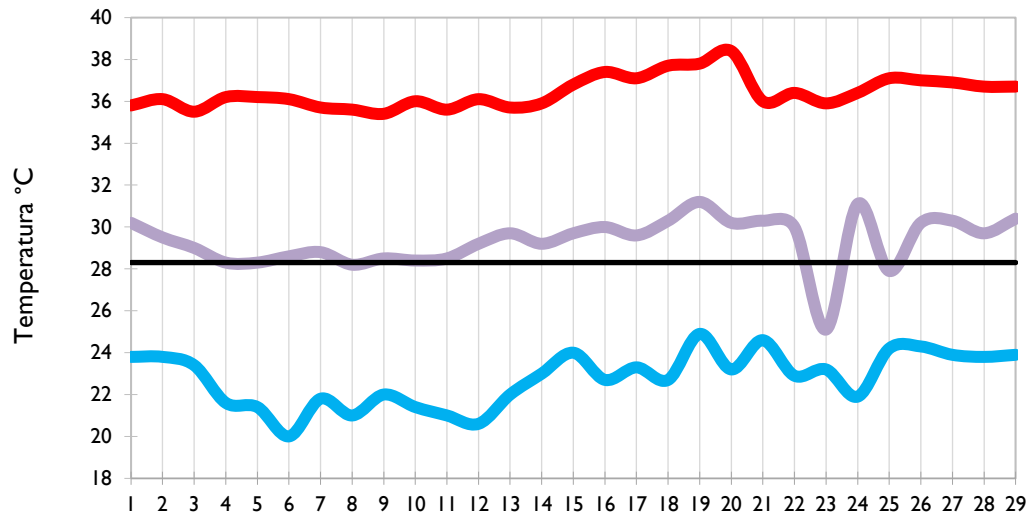


Temperatura Mínima

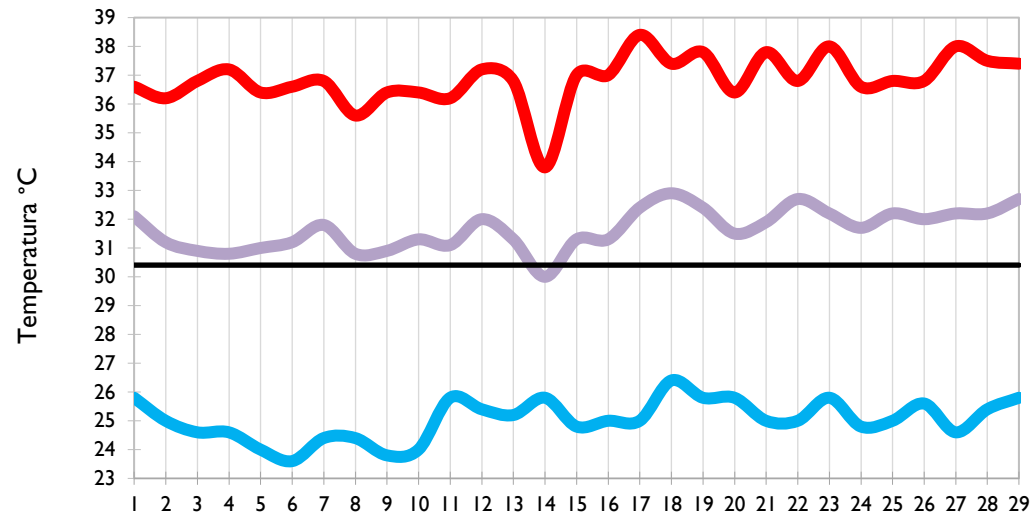
Temperatura Media

Temperatura Máxima

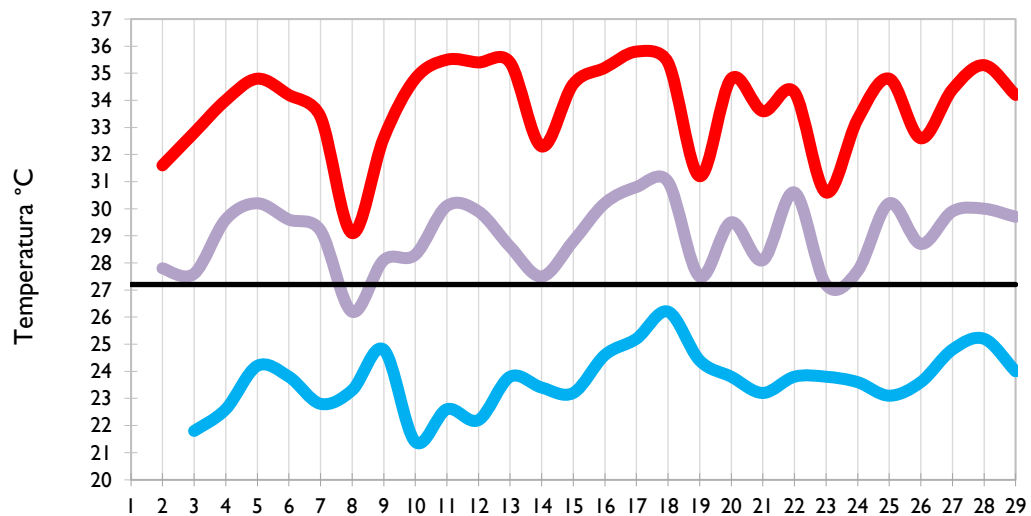
**Arauca - Arauca**



**Puerto Carreño - Vichada**



**Villavicencio - Meta**



**Leticia - Amazonas**

