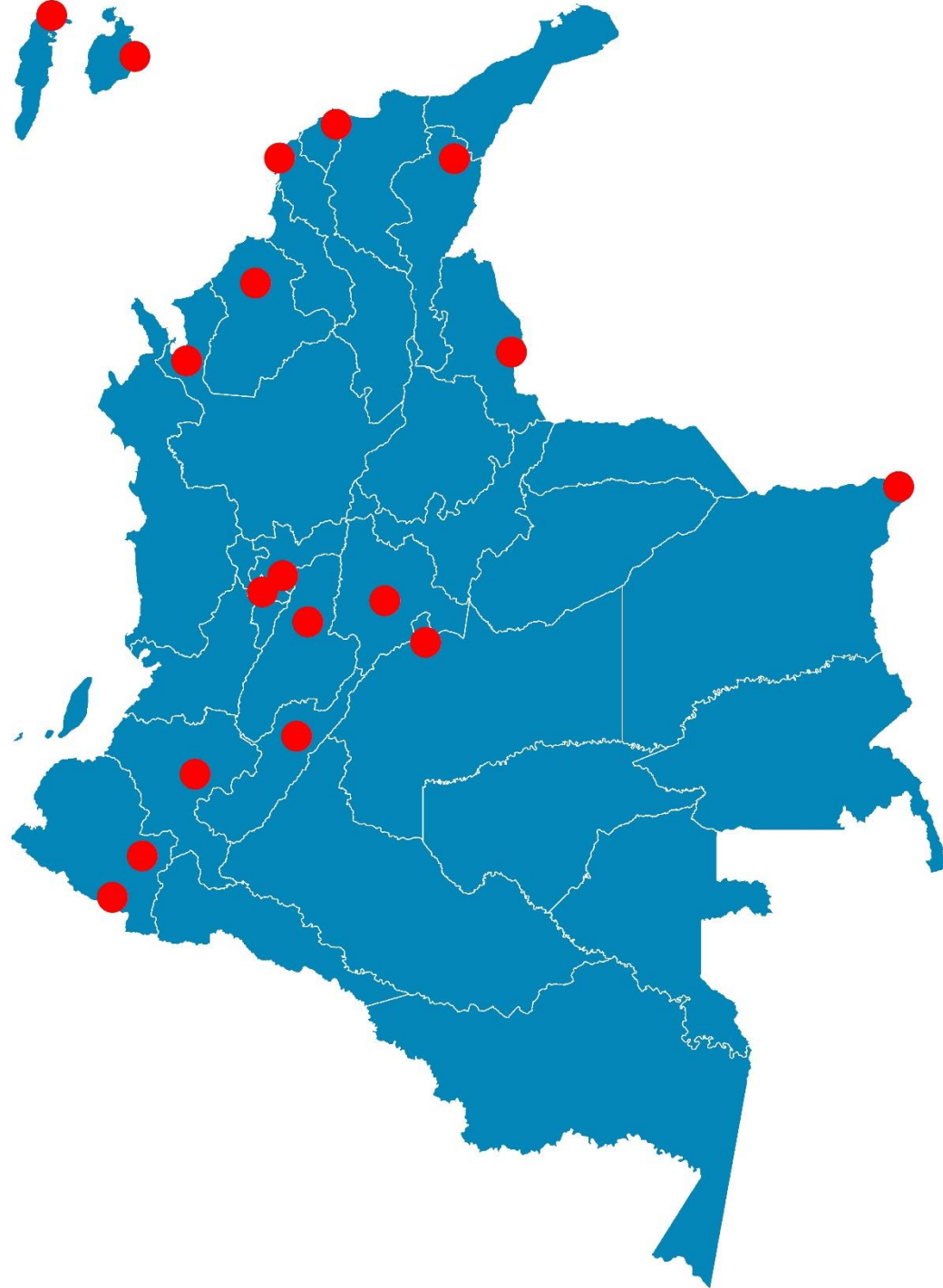


Mayo  
2020



# Boletín Climatológico

Seguimiento Diario  
de las Temperaturas Mínima, Media  
y Máxima

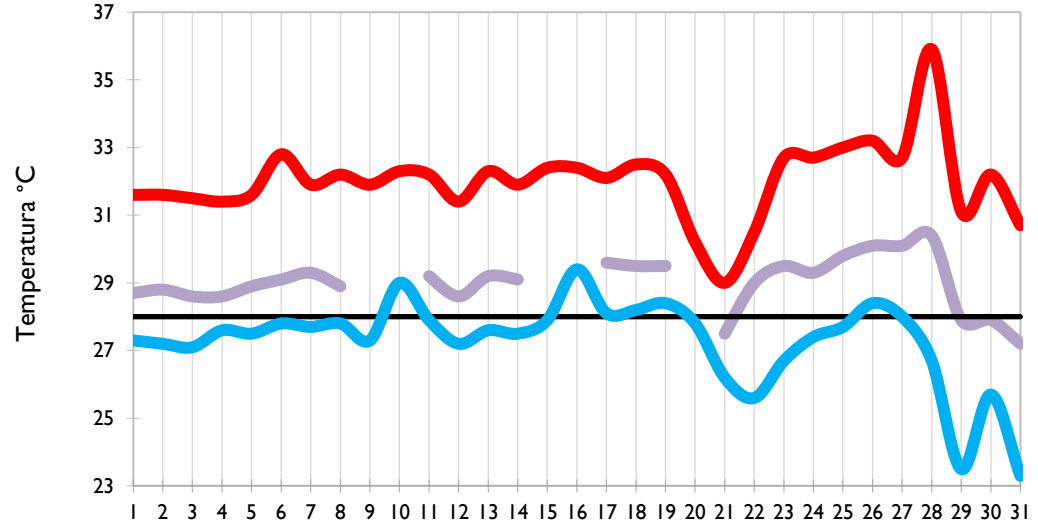
 Estaciones de  
Seguimiento

Temperatura Mínima

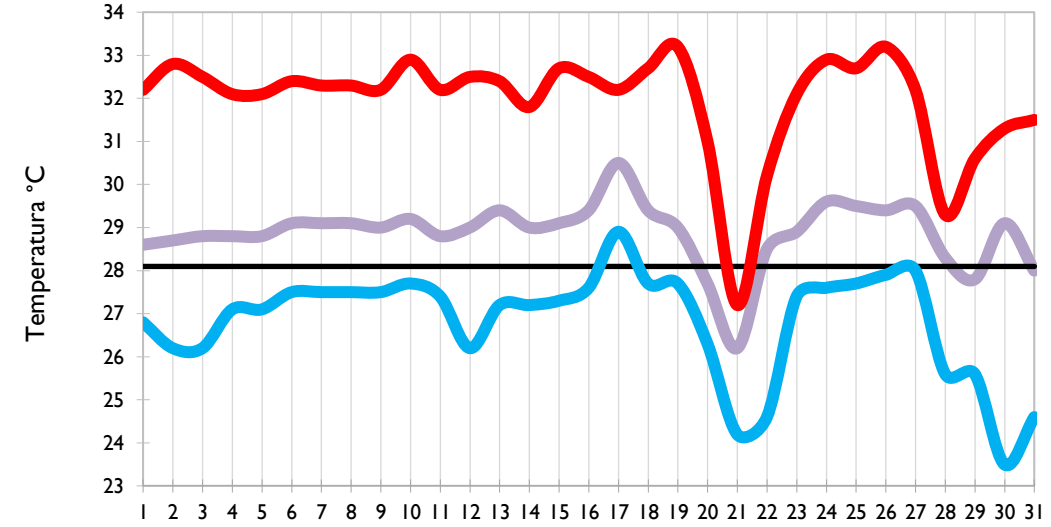
Temperatura Media

Temperatura Máxima

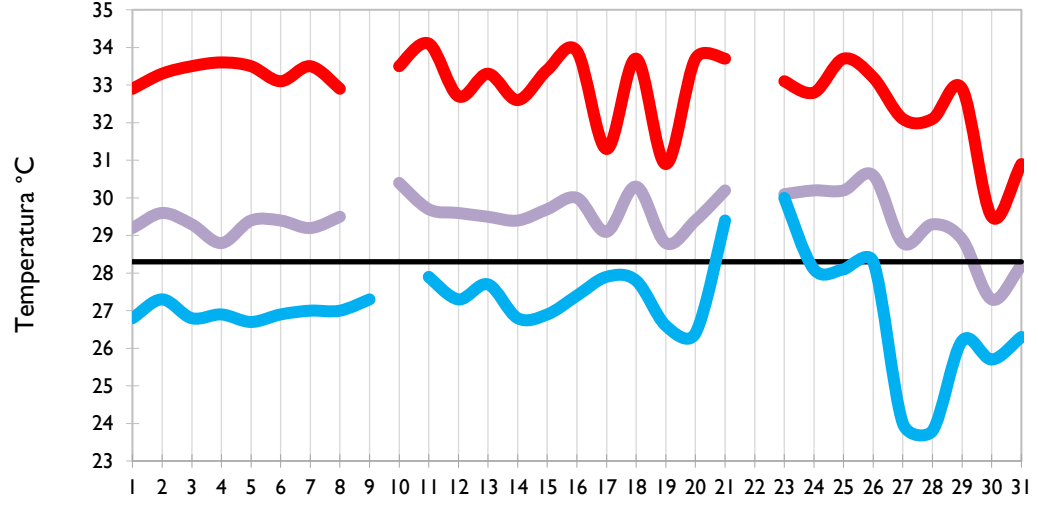
San Andrés - Archipiélago



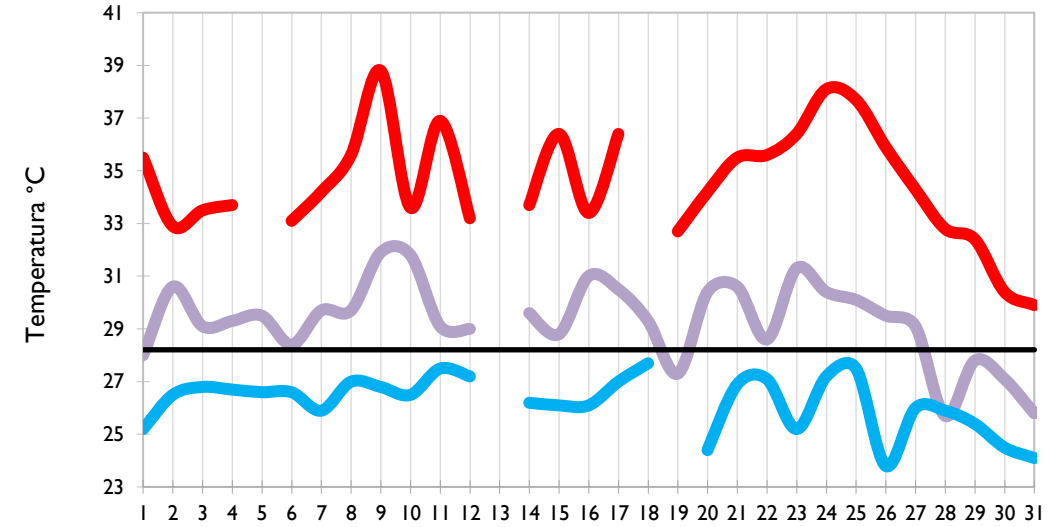
Providencia - Archipiélago



Cartagena - Bolívar



Soledad - Atlántico

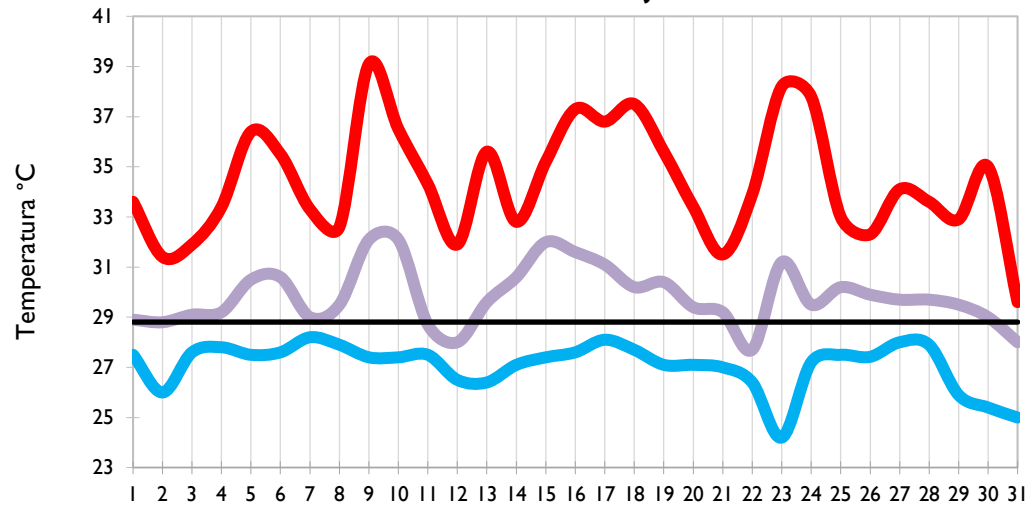


Temperatura Mínima

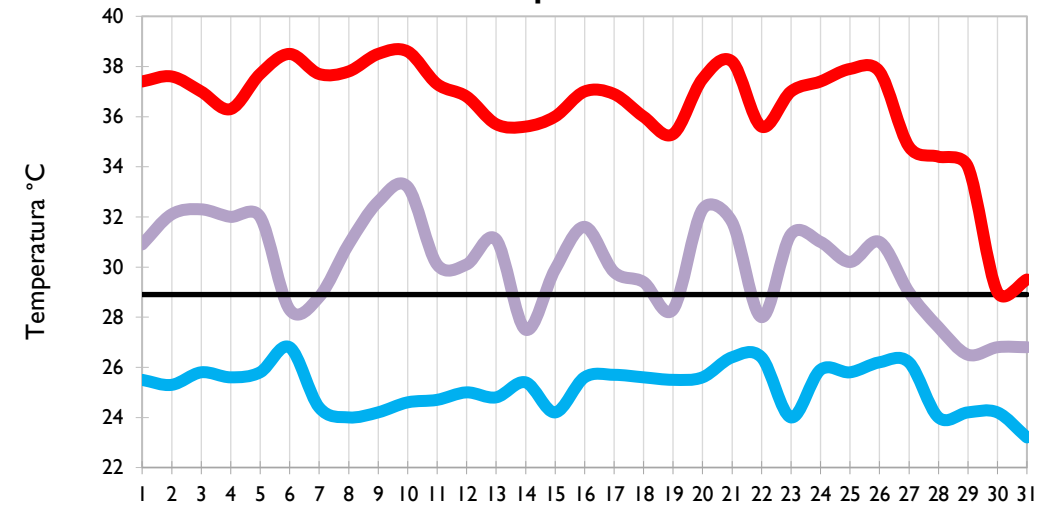
Temperatura Media

Temperatura Máxima

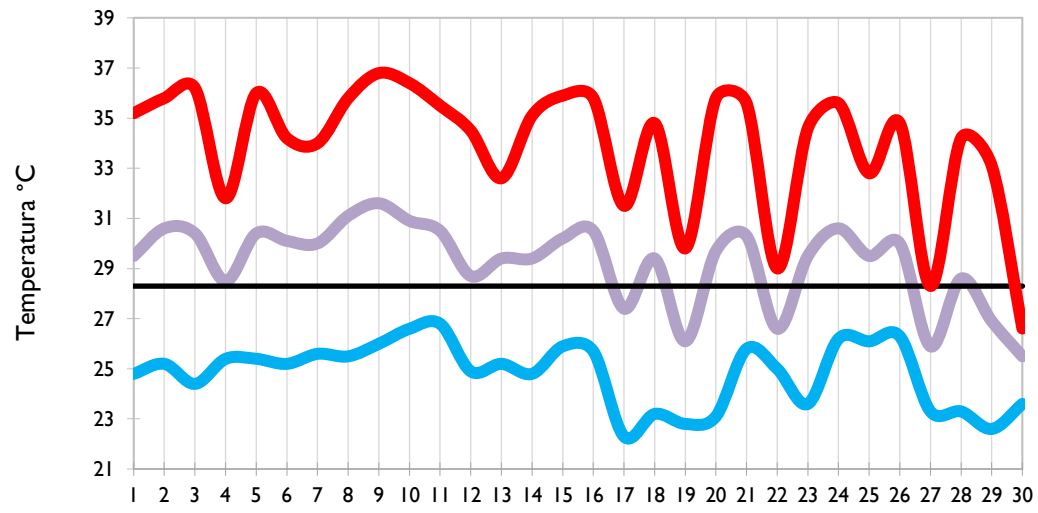
Riohacha - La Guajira



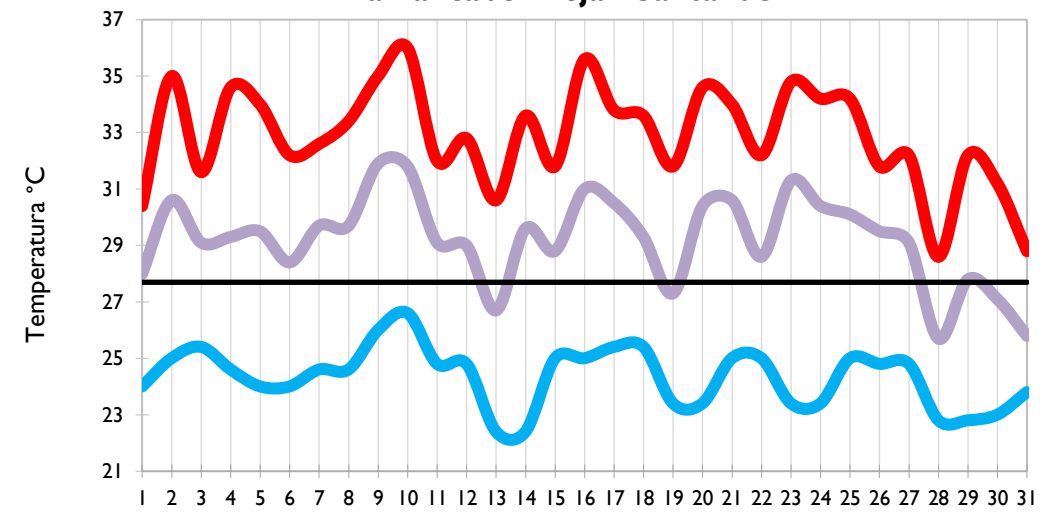
Valledupar - Cesar



Montería - Córdoba



Barrancabermeja - Santander

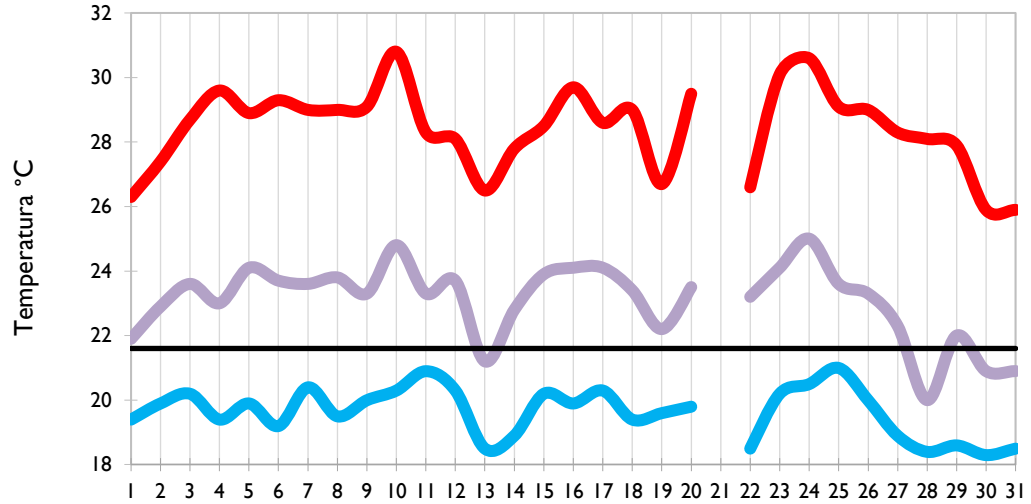


Temperatura Mínima

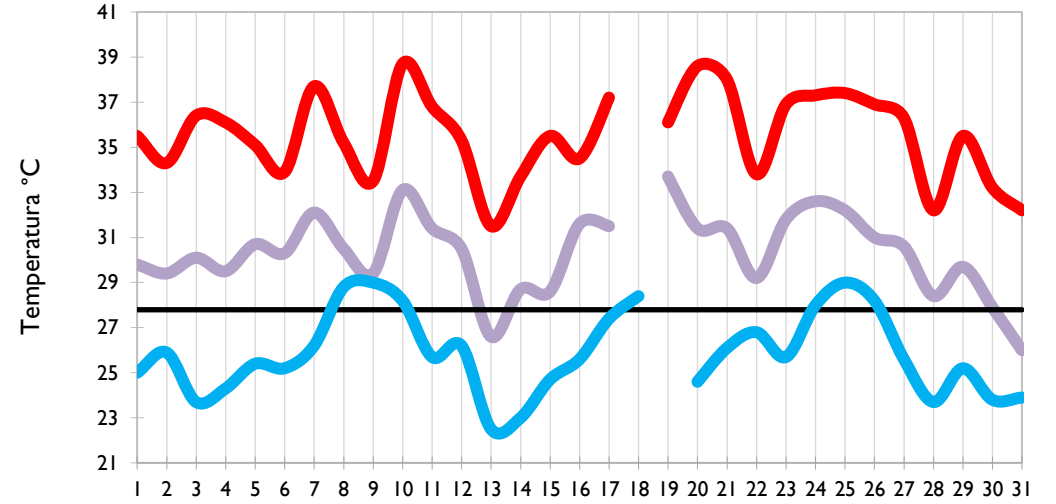
Temperatura Media

Temperatura Máxima

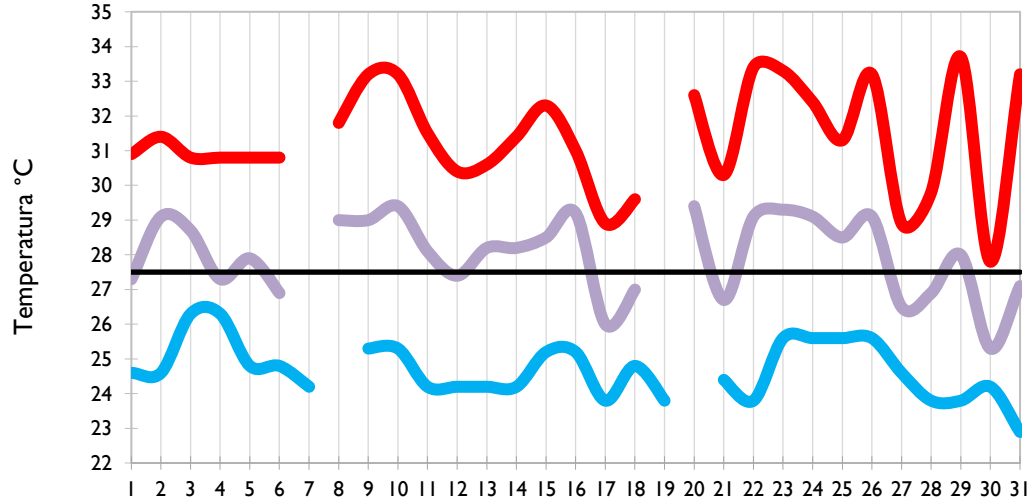
**Lebrija - Santander**



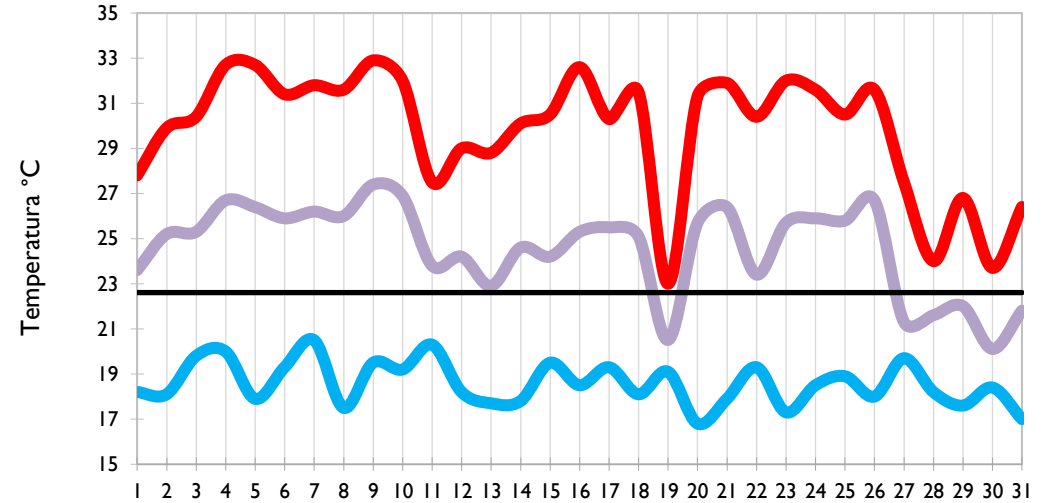
**Cúcuta - Norte de Santander**



**Los Cedros - Antioquia**



**Medellín - Antioquia**

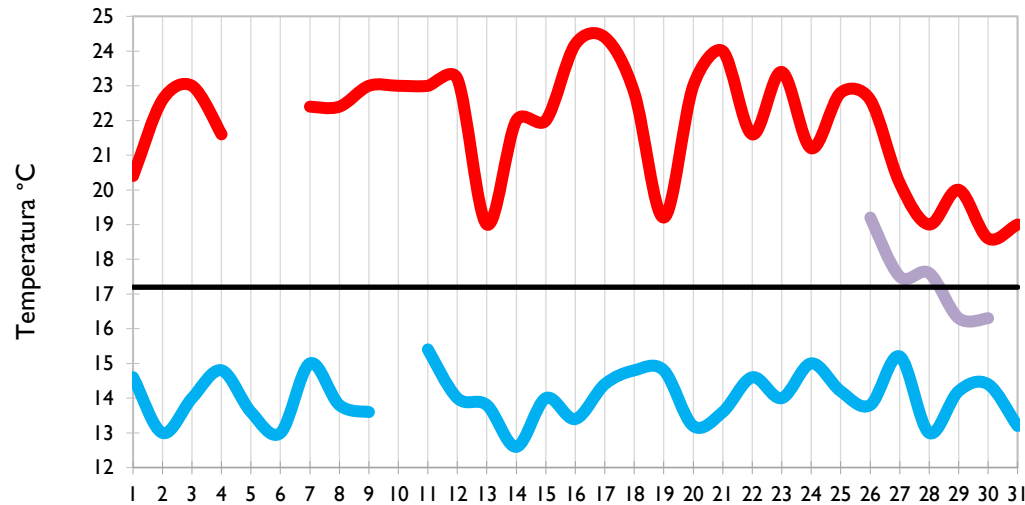


Temperatura Mínima

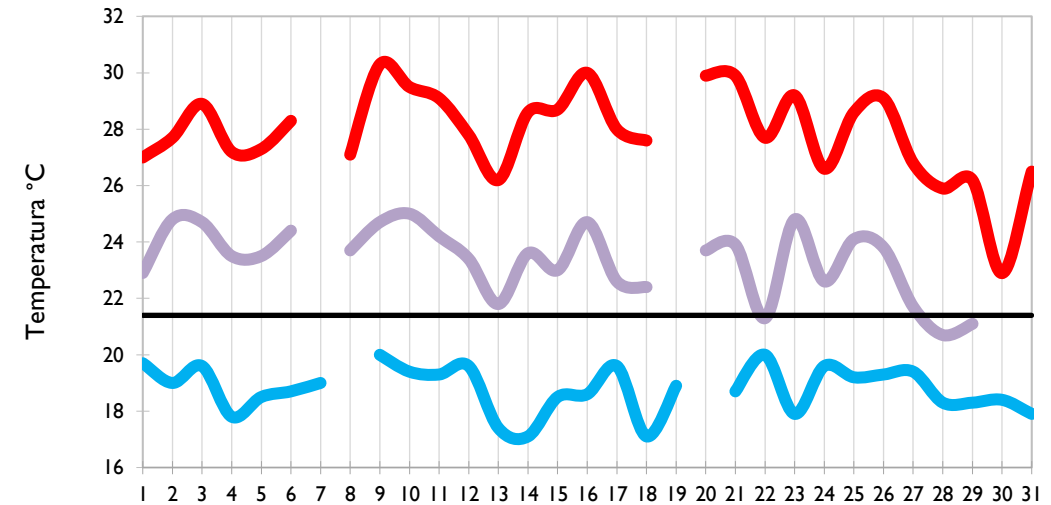
Temperatura Media

Temperatura Máxima

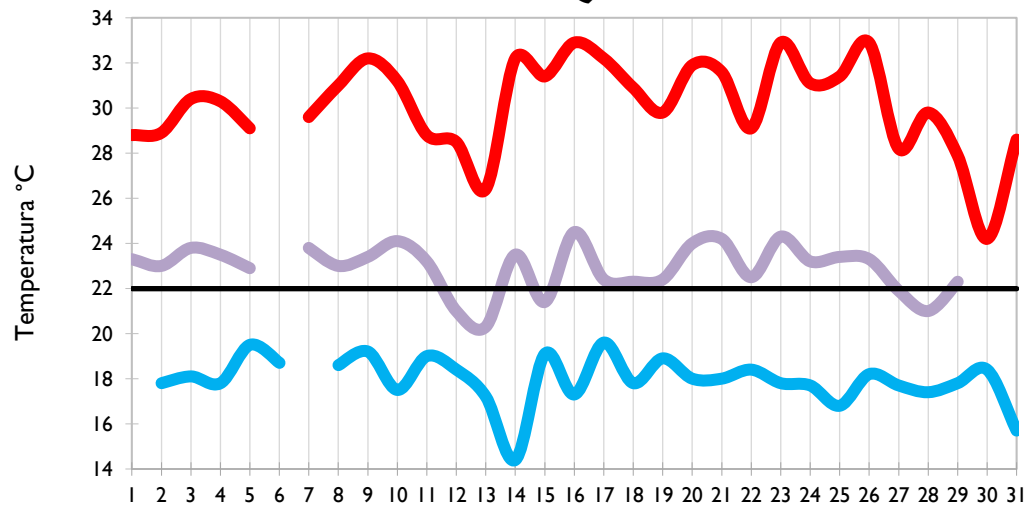
Manizales - Caldas



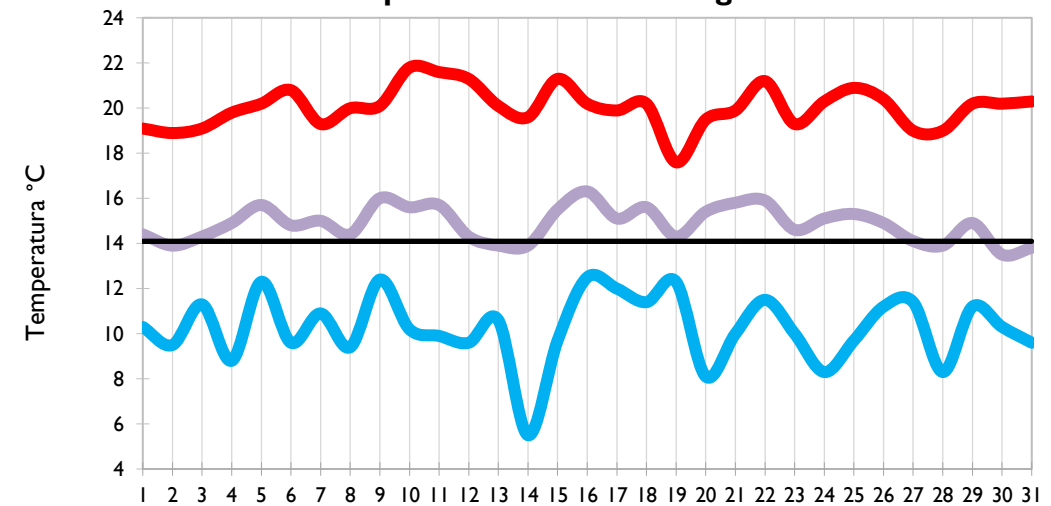
Pereira - Risaralda



Armenia - Quindío



Aeropuerto El Dorado - Bogotá D. C.

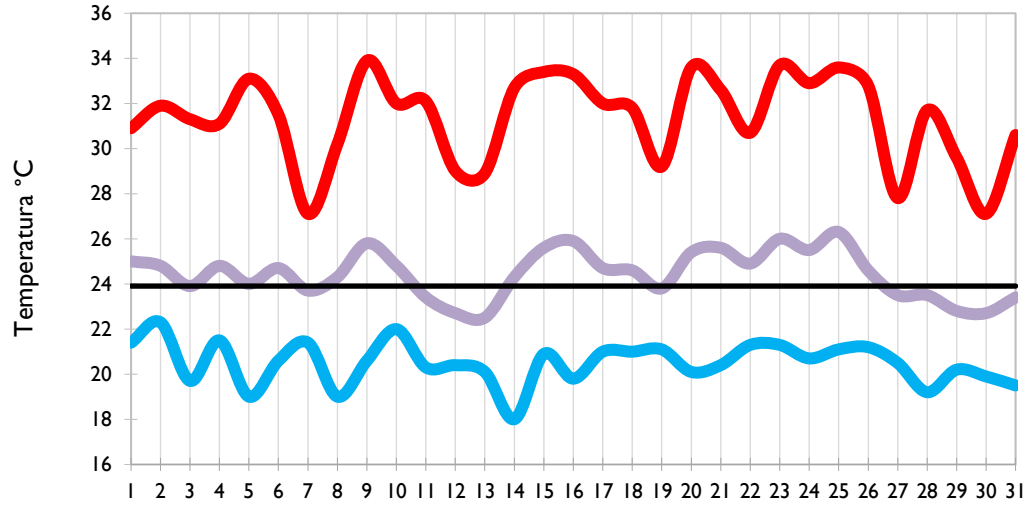


Temperatura Mínima

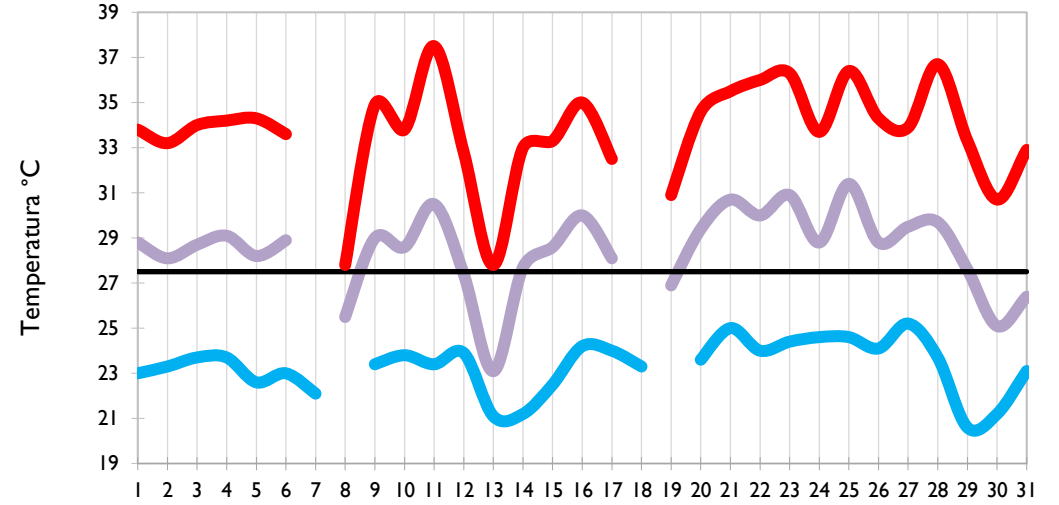
Temperatura Media

Temperatura Máxima

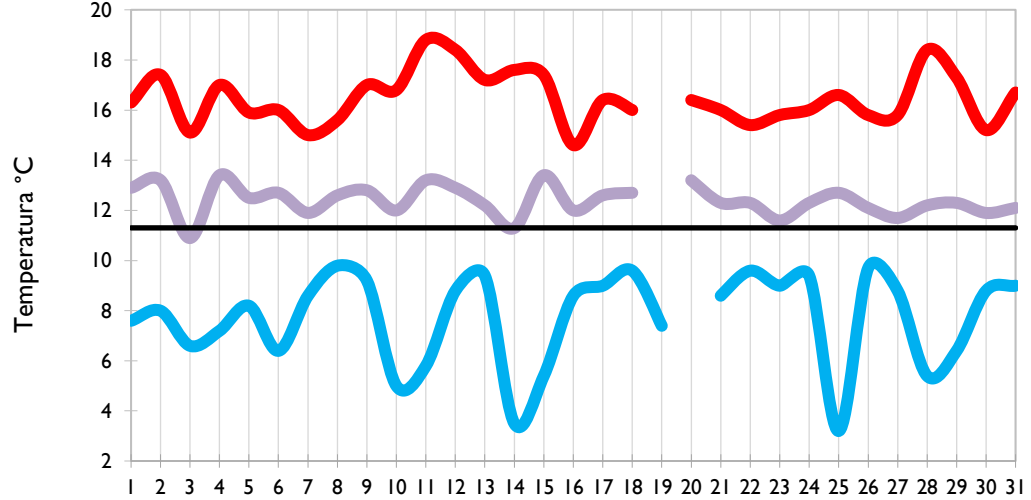
**Palmira - Valle del Cauca**



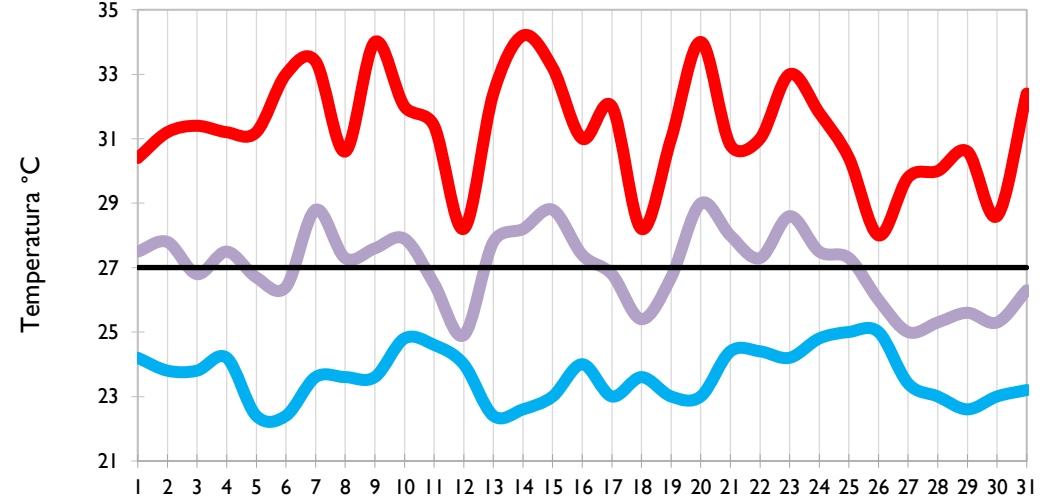
**Neiva - Huila**



**Ipiales - Nariño**



**Quibdó - Chocó**

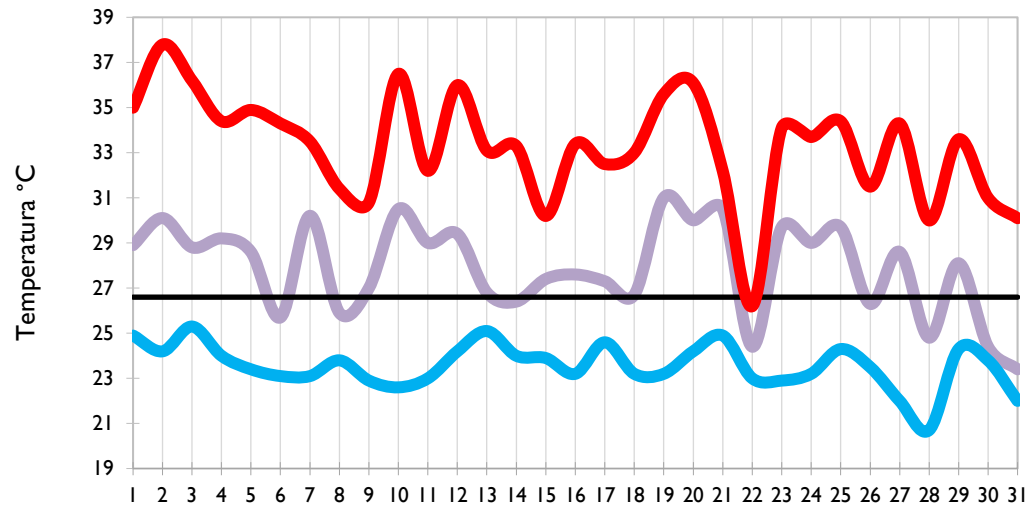


Temperatura Mínima

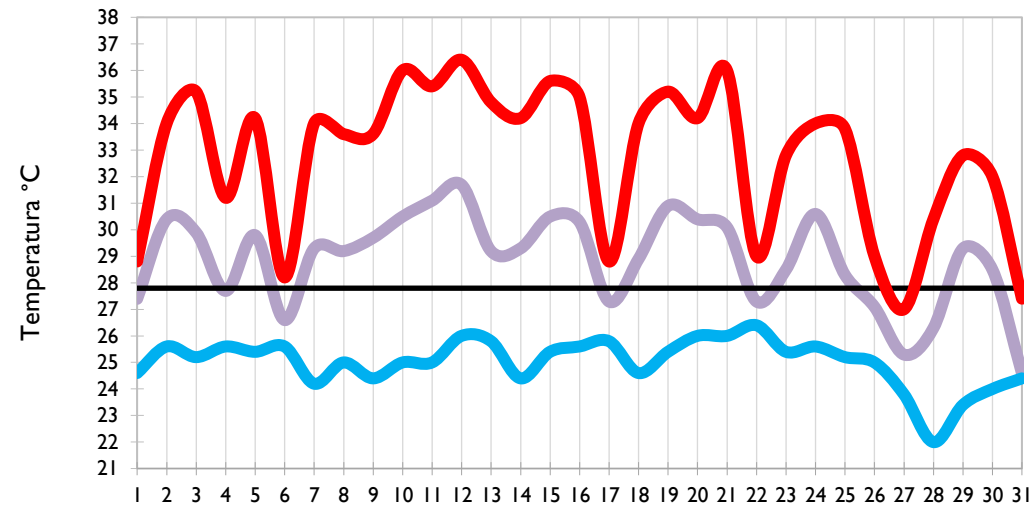
Temperatura Media

Temperatura Máxima

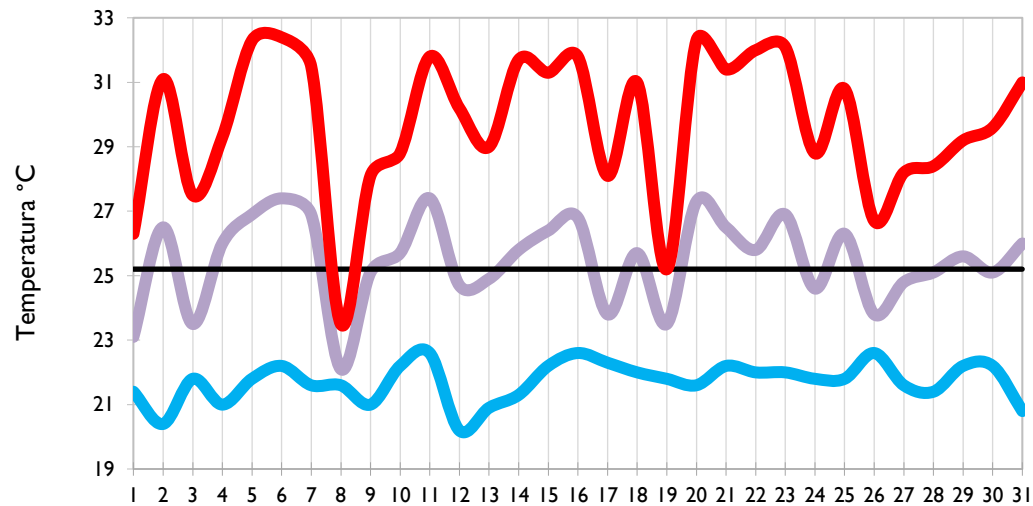
**Arauca - Arauca**



**Puerto Carreño - Vichada**



**Villavicencio - Meta**



**Leticia - Amazonas**

