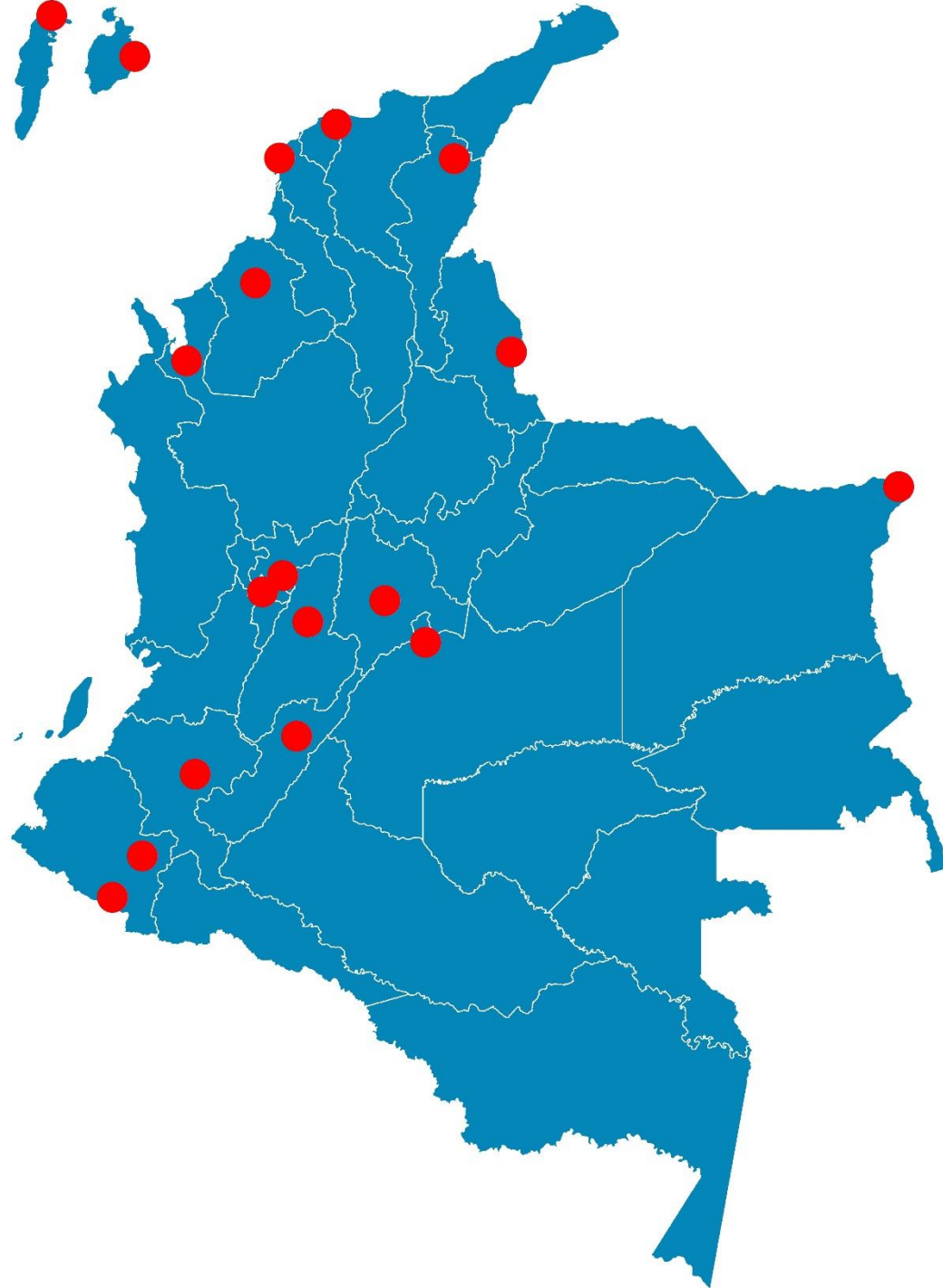


Octubre
2020



Boletín Climatológico

Seguimiento Diario
de las Temperaturas Mínima, Media
y Máxima

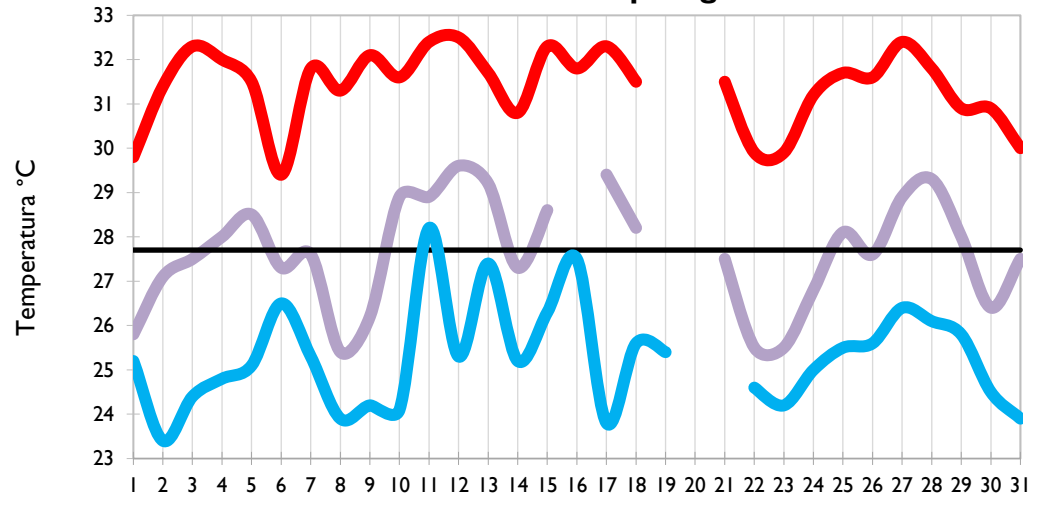

Estaciones de
Seguimiento

Temperatura Mínima

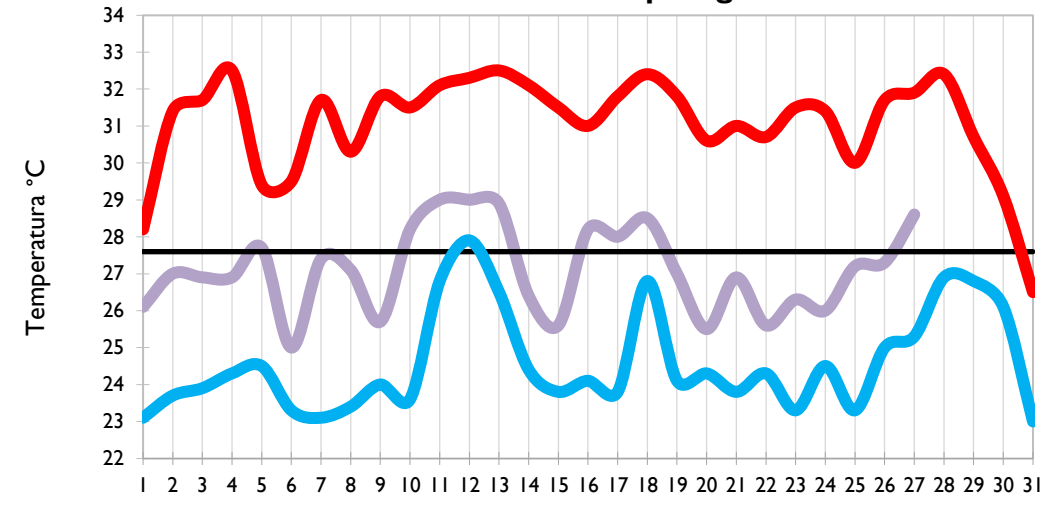
Temperatura Media

Temperatura Máxima

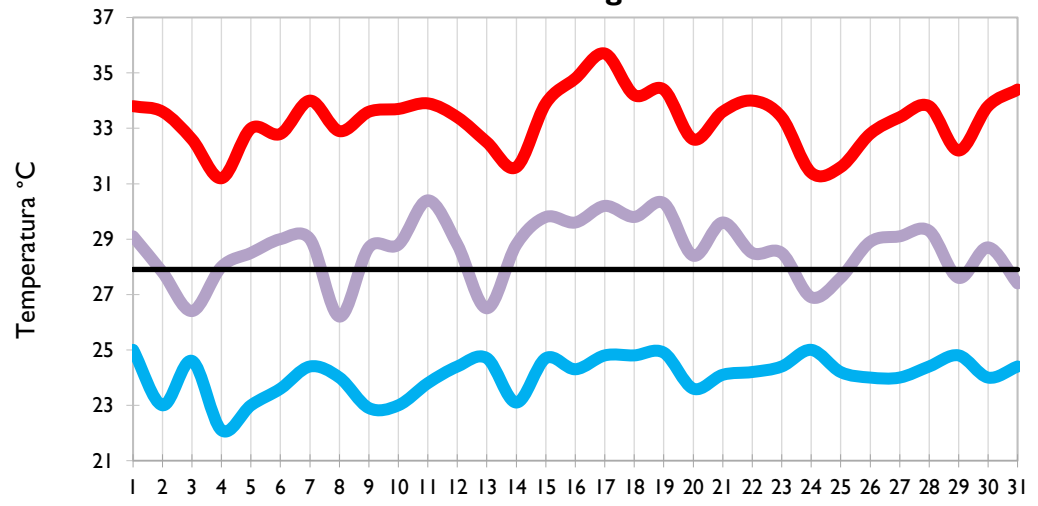
San Andrés - Archipiélago



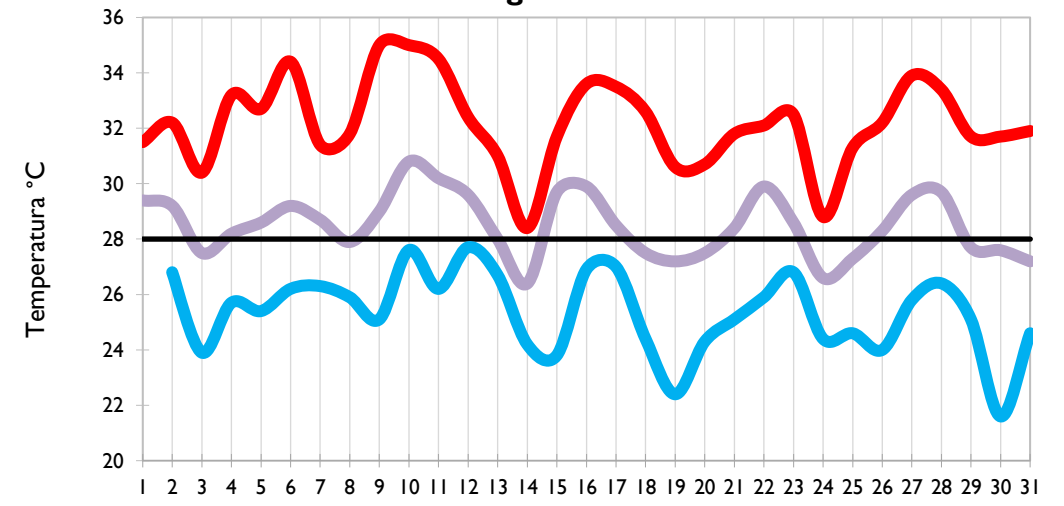
Providencia - Archipiélago



Santa Marta - Magdalena



Cartagena - Bolívar

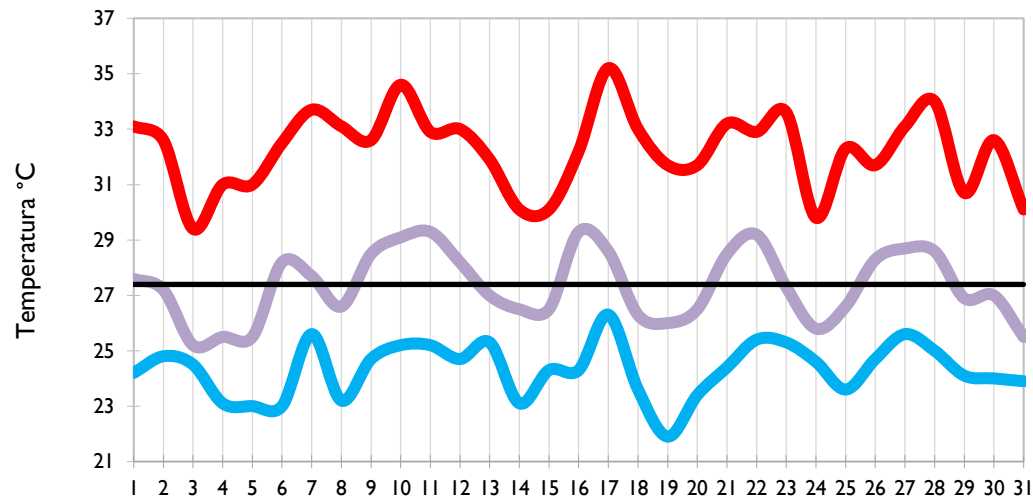


Temperatura Mínima

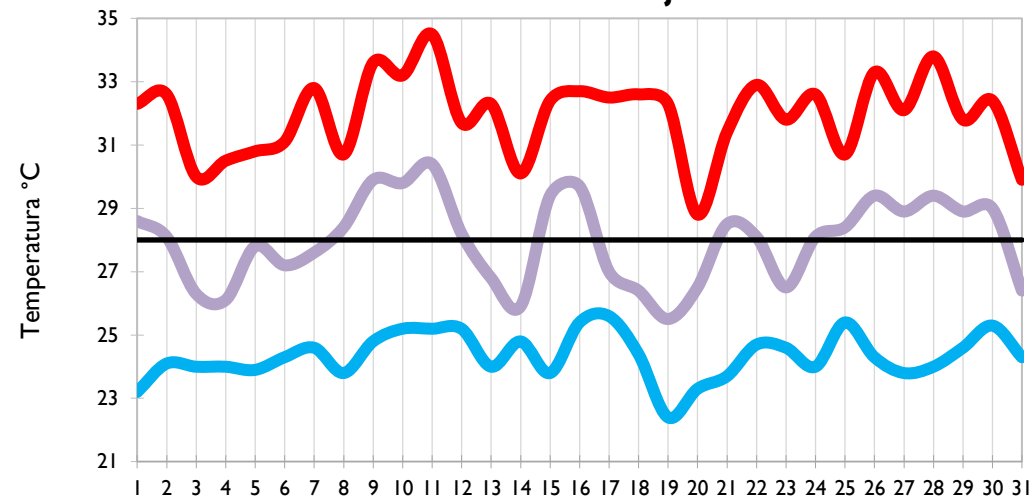
Temperatura Media

Temperatura Máxima

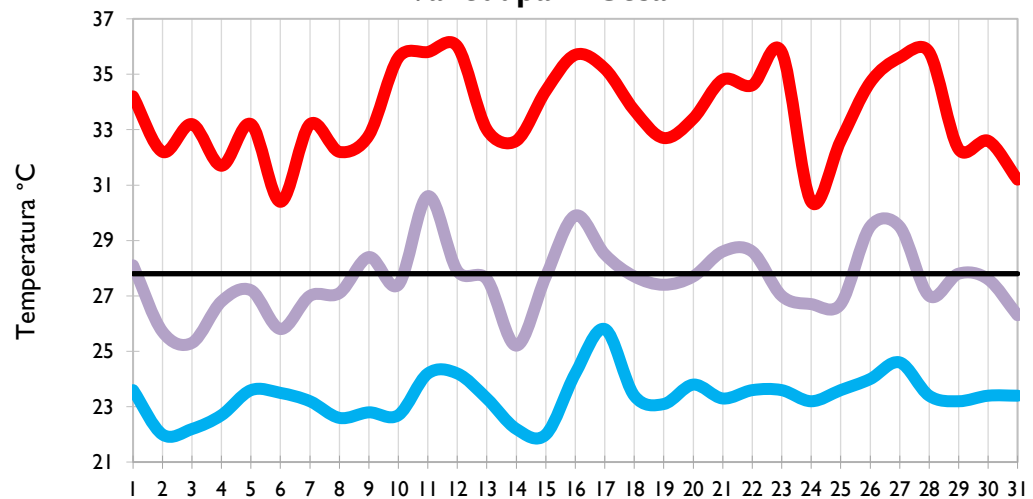
Soledad - Atlántico



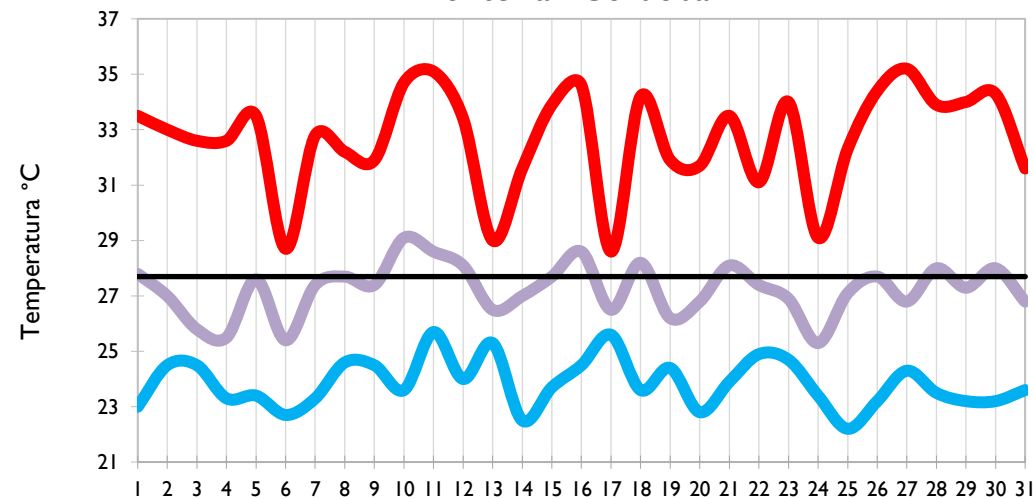
Riohacha - La Guajira



Valledupar - Cesar



Montería - Córdoba

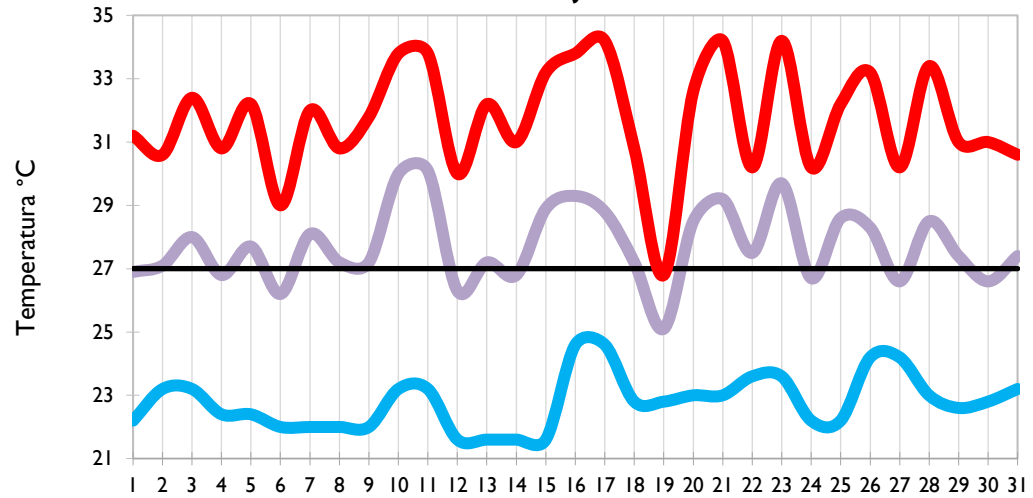


Temperatura Mínima

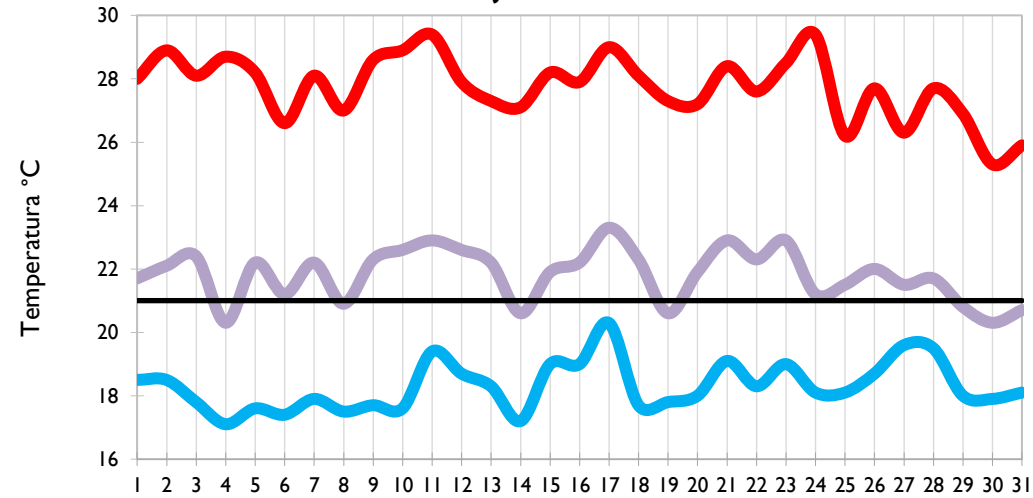
Temperatura Media

Temperatura Máxima

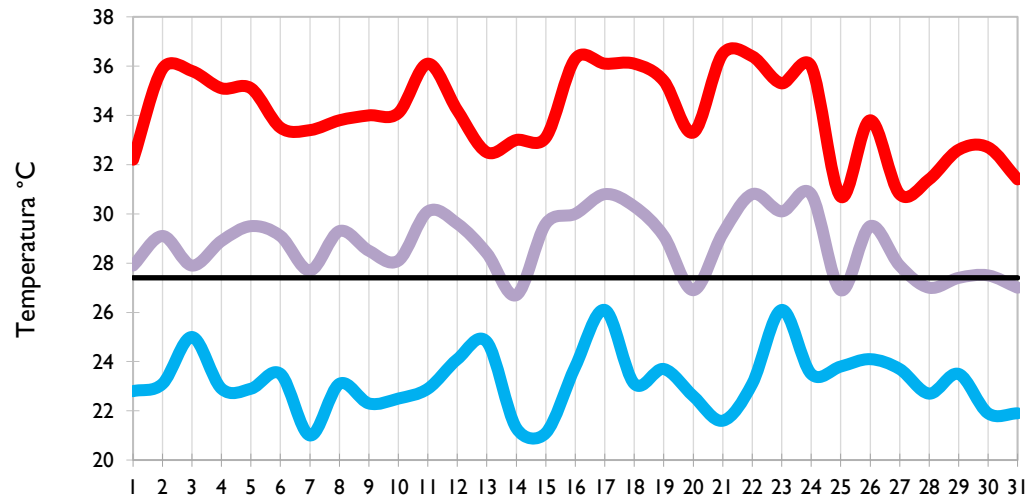
Barrancabermeja - Santander



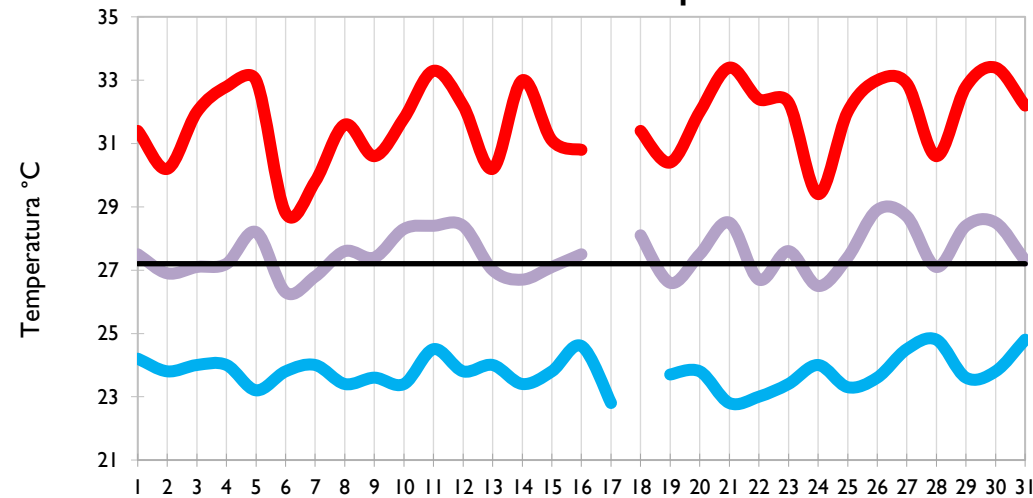
Lebrija - Santander



Cúcuta - Norte de Santander



Los Cedros - Antioquia

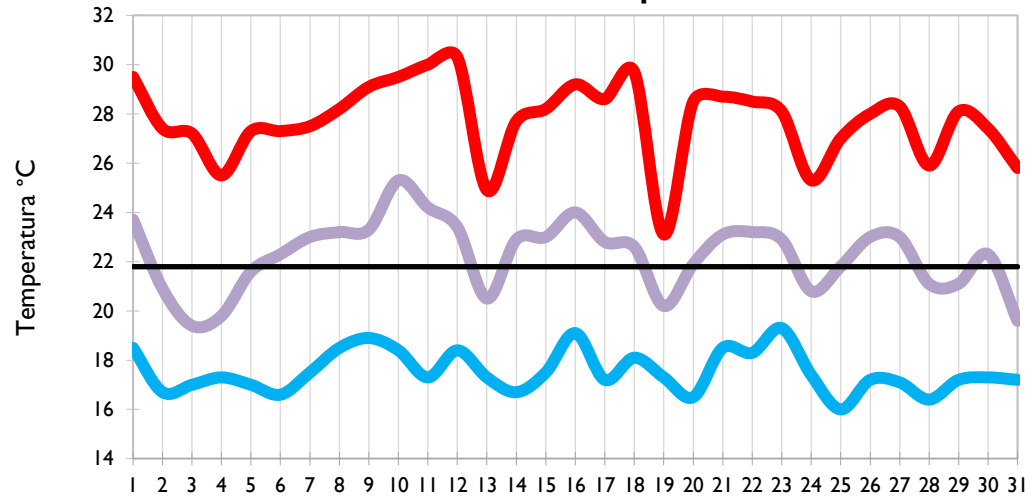


Temperatura Mínima

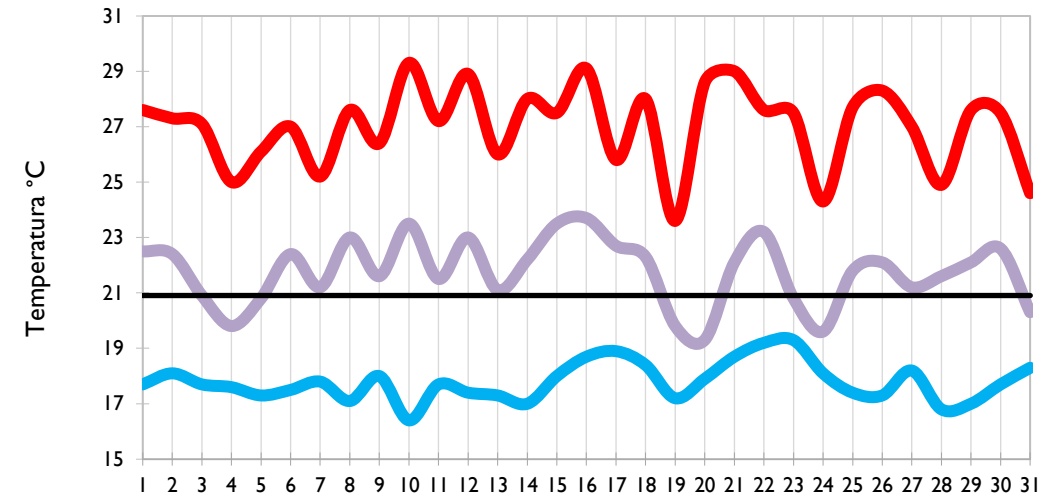
Temperatura Media

Temperatura Máxima

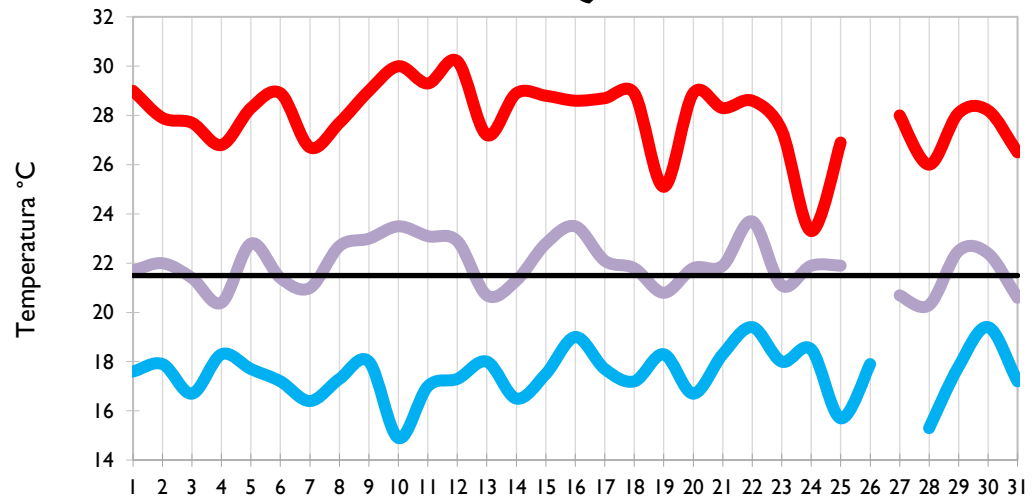
Medellín - Antioquia



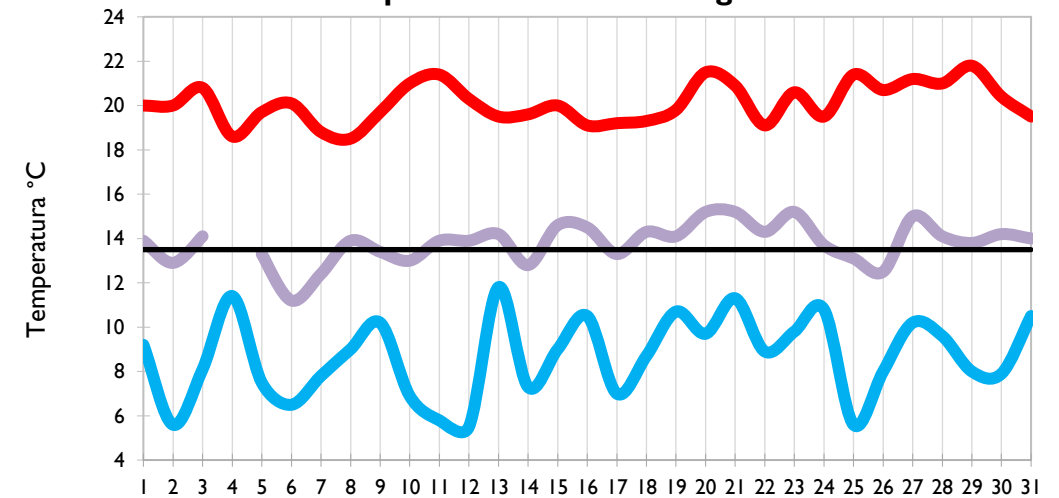
Pereira - Risaralda



Armenia - Quindío



Aeropuerto El Dorado - Bogotá D. C.

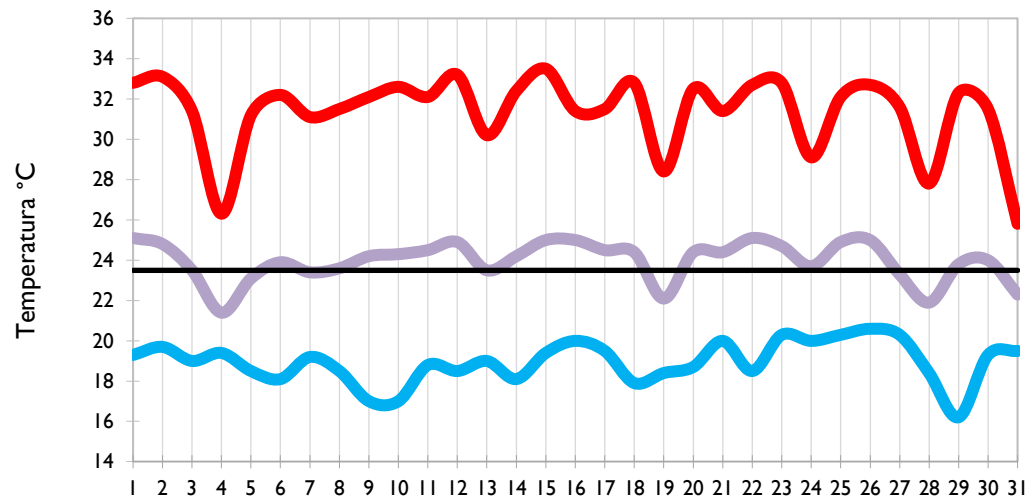


Temperatura Mínima

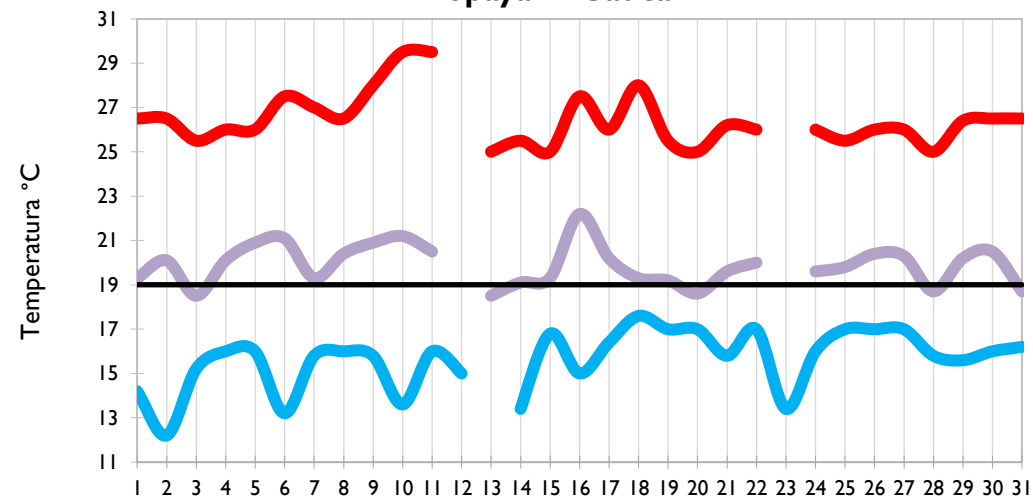
Temperatura Media

Temperatura Máxima

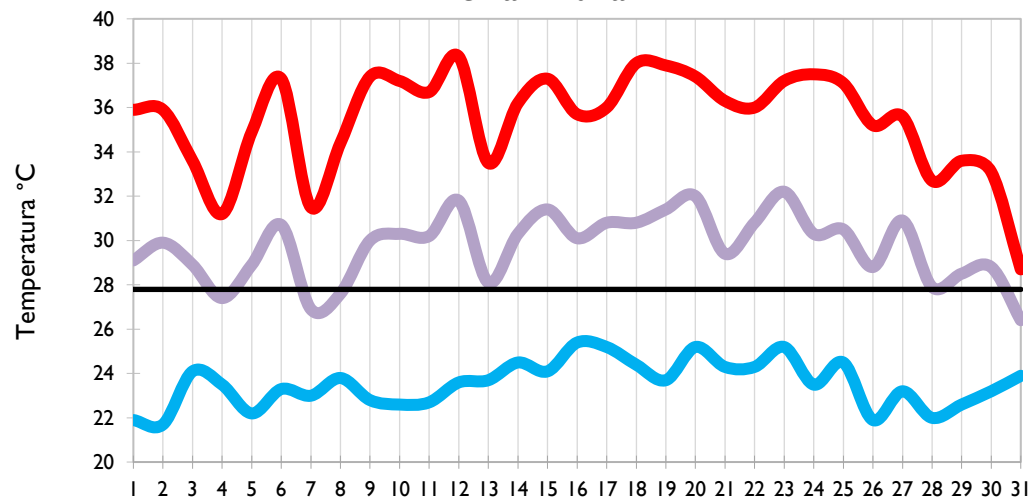
Palmira - Valle del Cauca



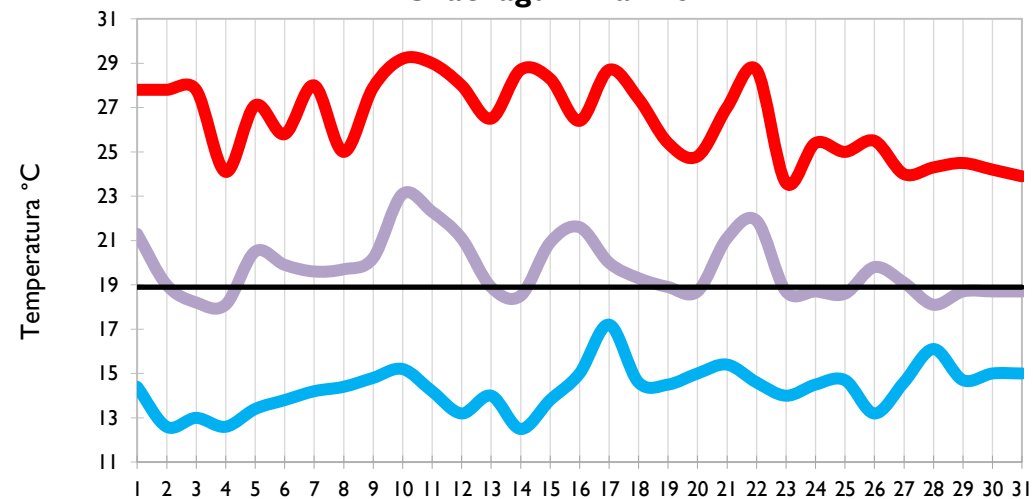
Popayán - Cauca



Neiva - Huila



Chachagüí - Nariño

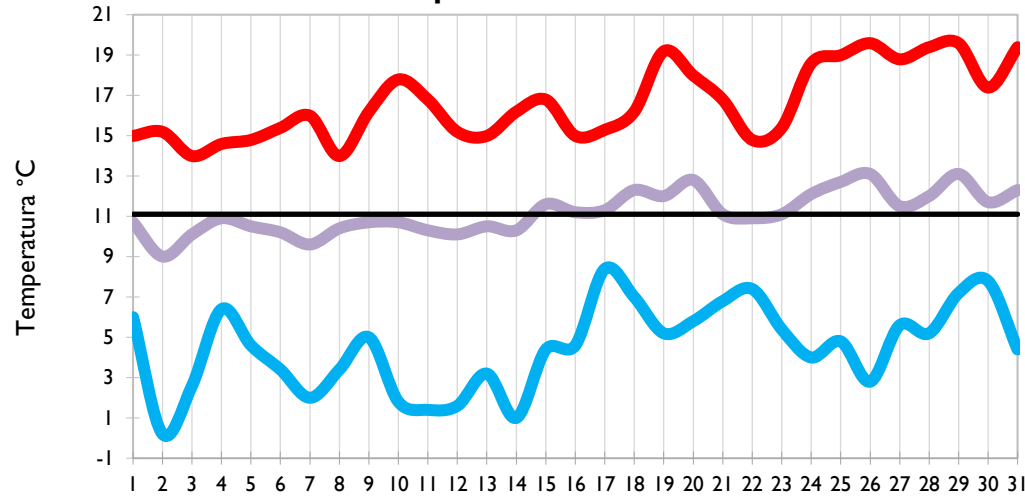


Temperatura Mínima

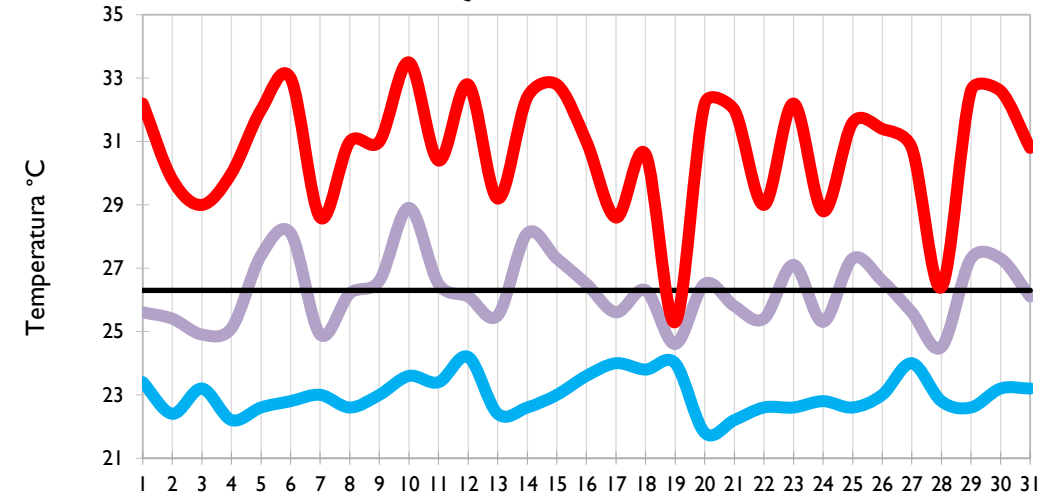
Temperatura Media

Temperatura Máxima

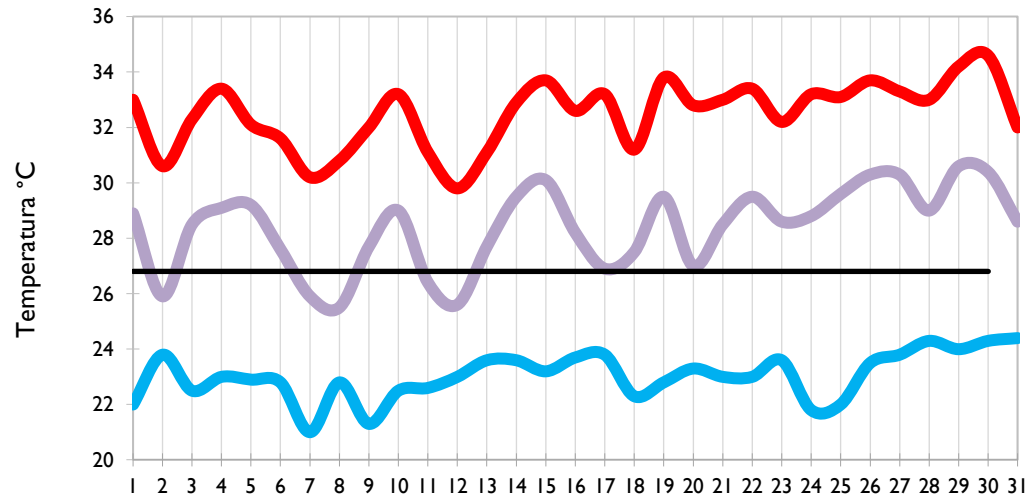
Ipiales - Nariño



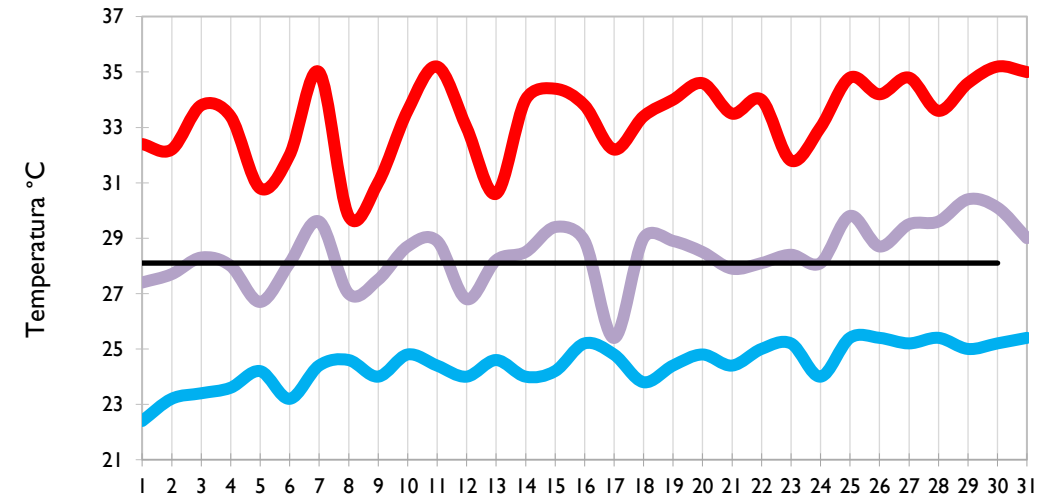
Quibdó - Chocó



Arauca - Arauca



Puerto Carreño - Vichada

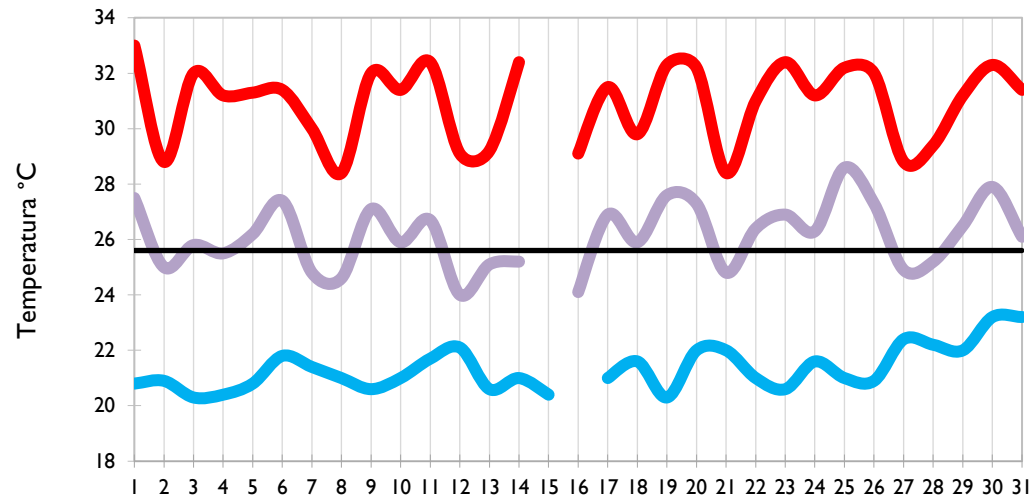


Temperatura Mínima

Temperatura Media

Temperatura Máxima

Villavicencio - Meta



Leticia - Amazonas

