

Enero
2021



Boletín Climatológico

Comportamiento Mensual
del Número de Días con Lluvia

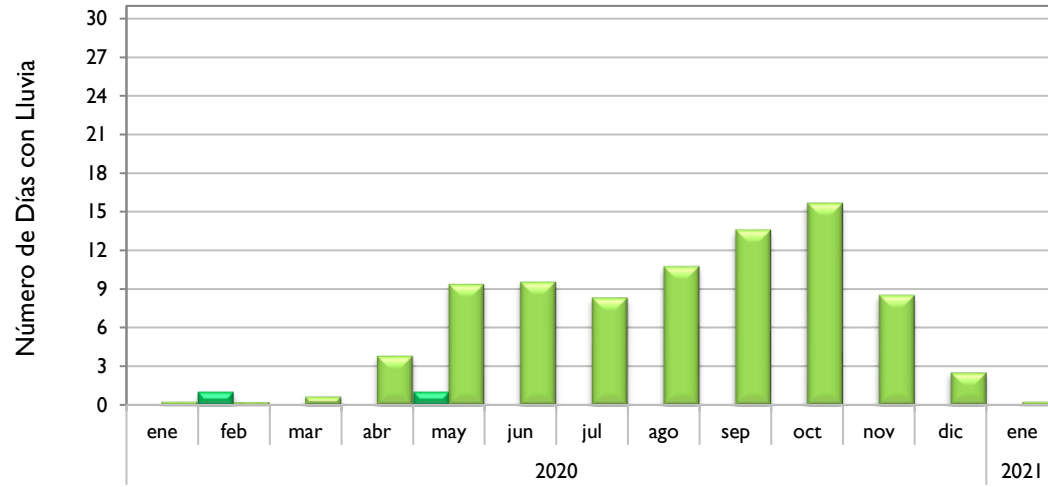
●
Estaciones de
Seguimiento

Observado 2020

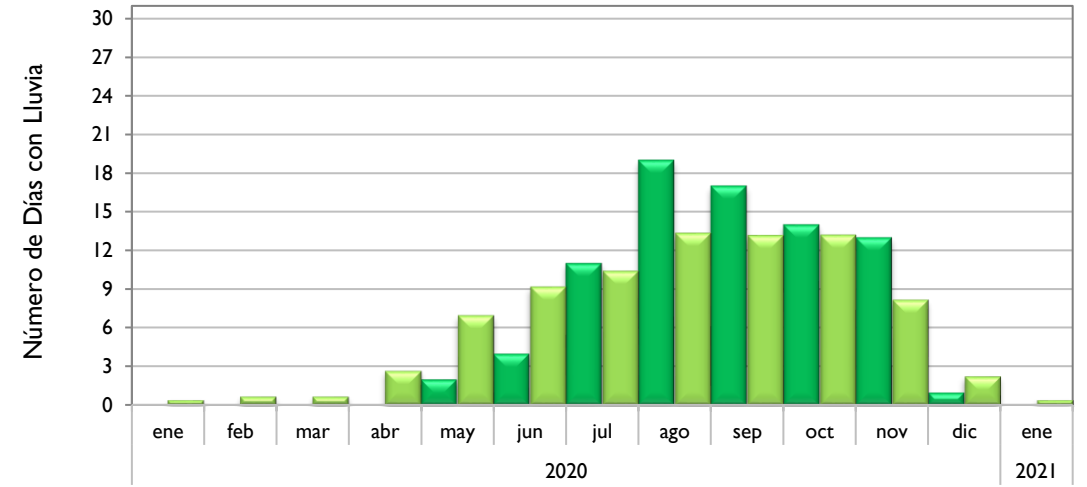
Observado 2021

Climatología

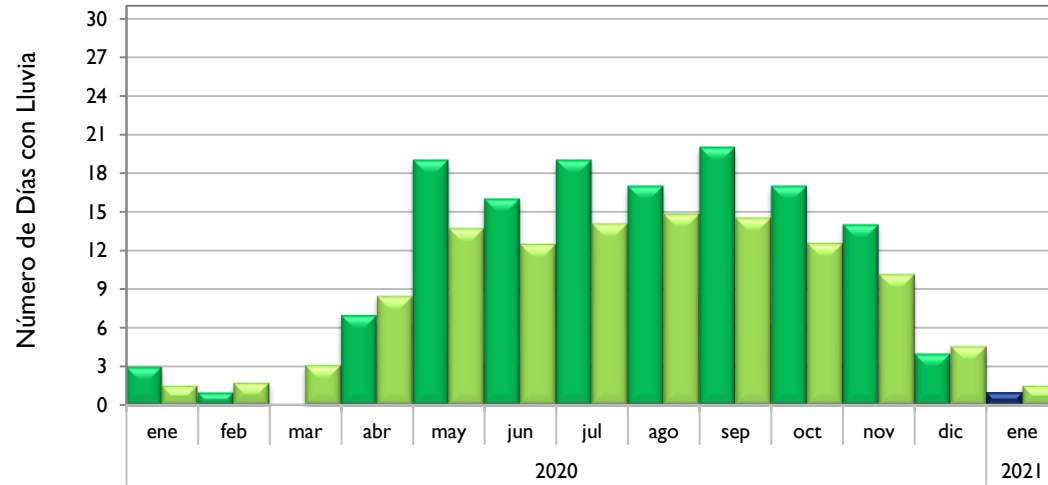
Soledad - Atlántico



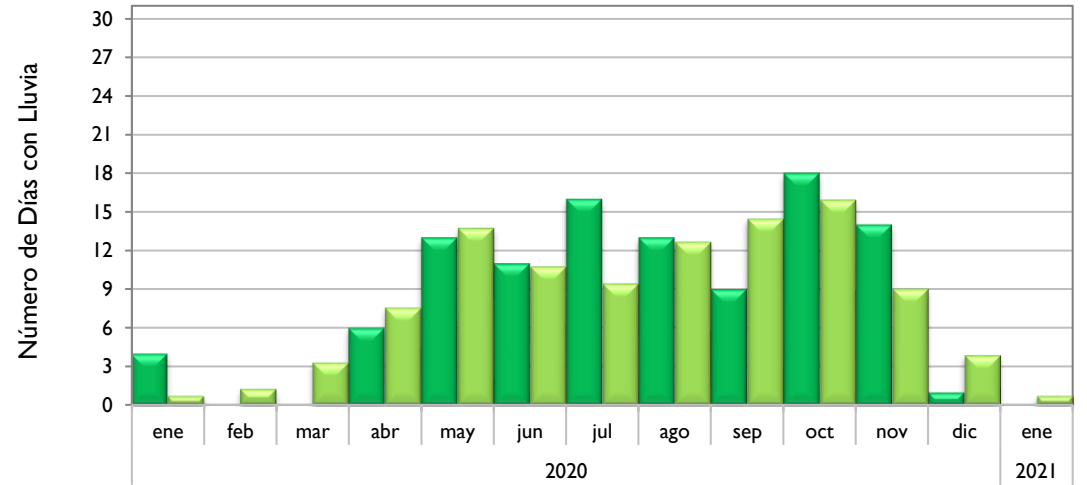
Santa Marta - Magdalena



Montería - Córdoba



Valledupar - Cesar

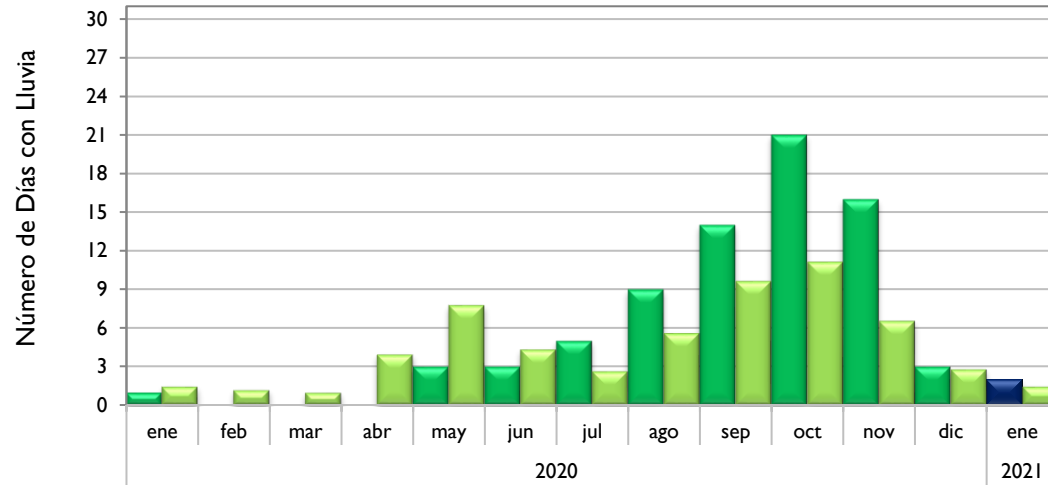


■ Observado 2020

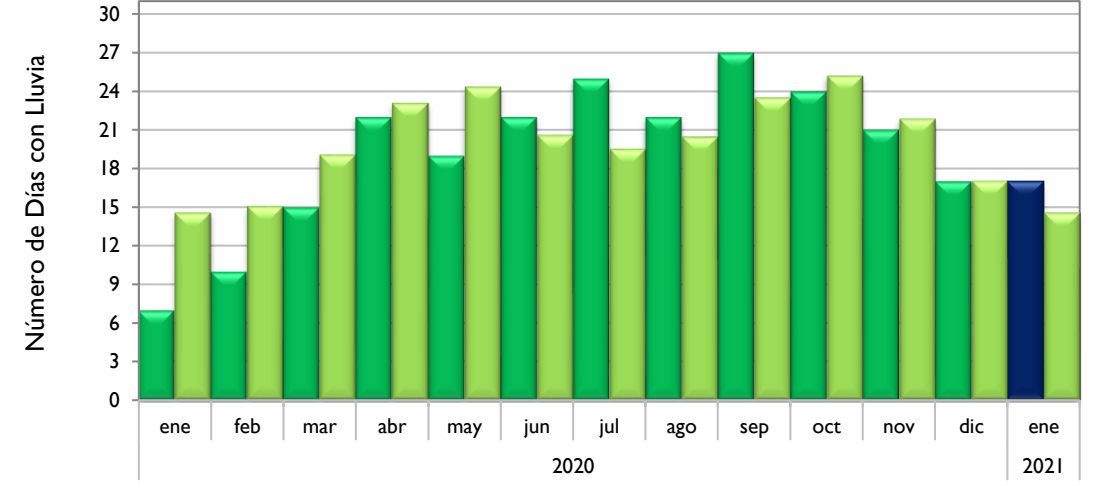
■ Observado 2021

■ Climatología

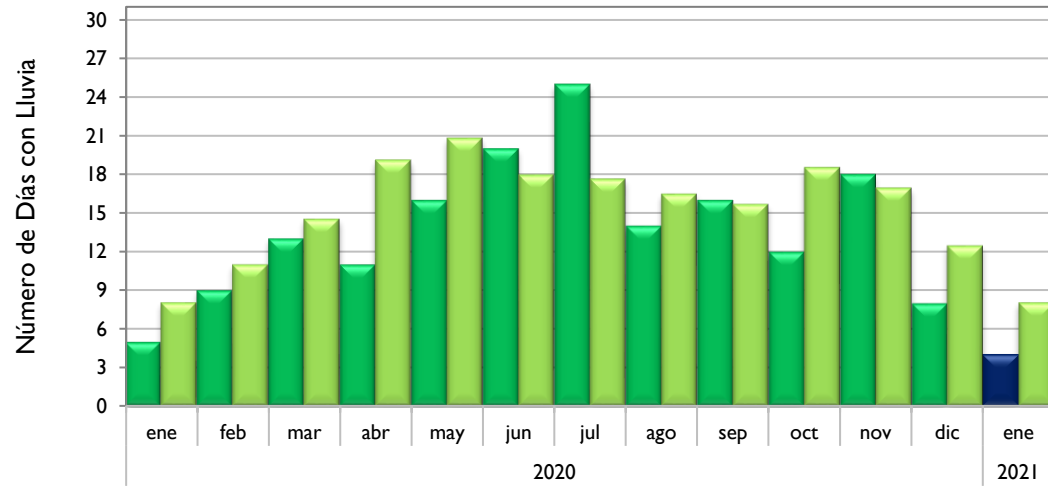
Riohacha - La Guajira



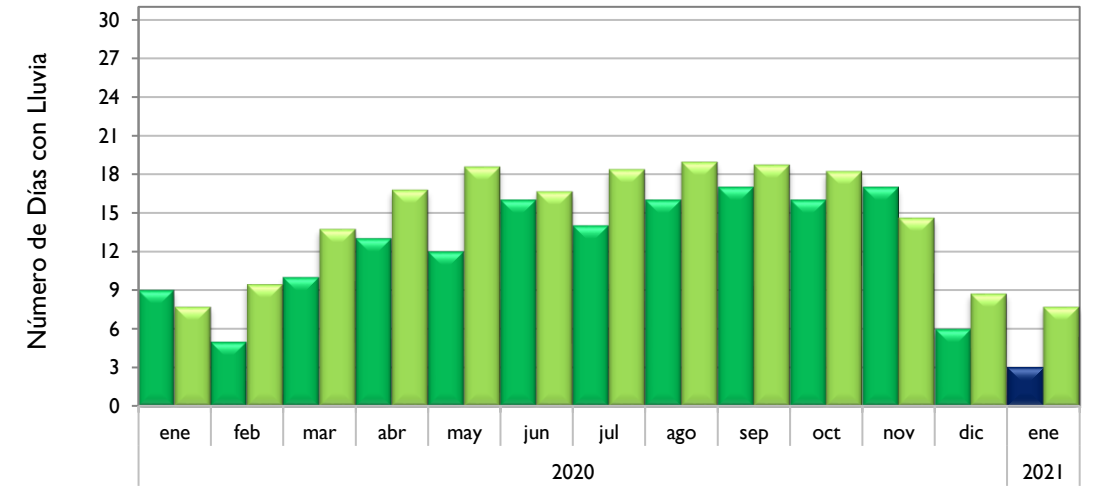
Rionegro - Antioquia



Aeropuerto El Dorado - Bogotá D. C.



Lebrija - Santander

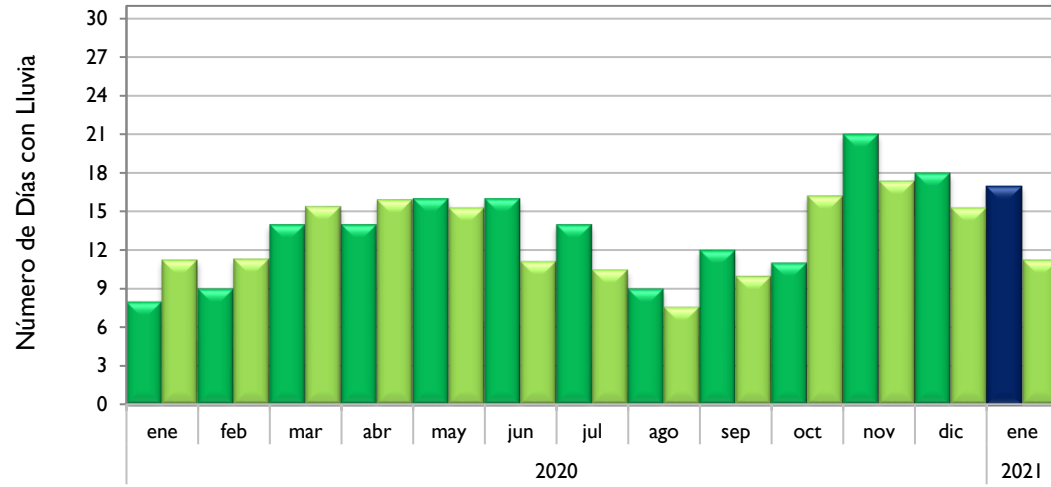


■ Observado 2020

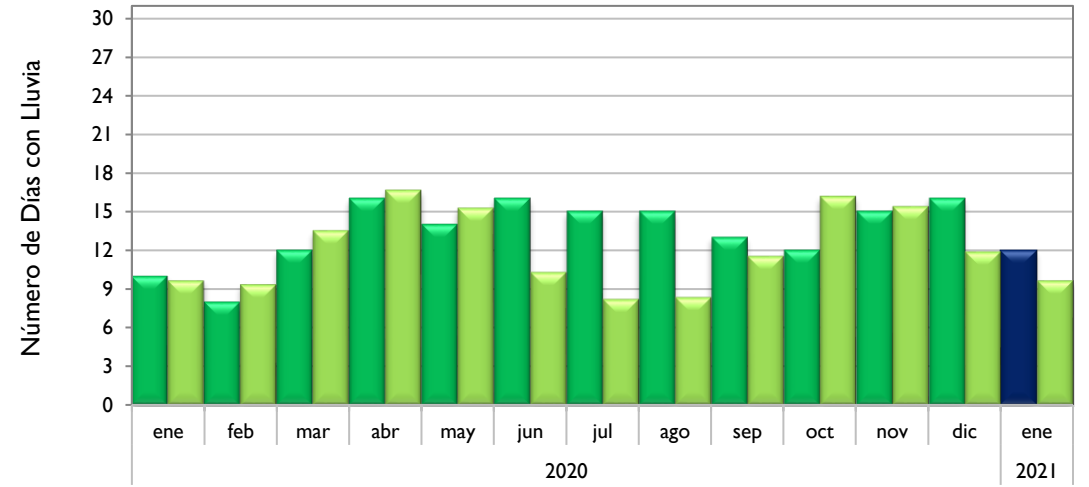
■ Observado 2021

■ Climatología

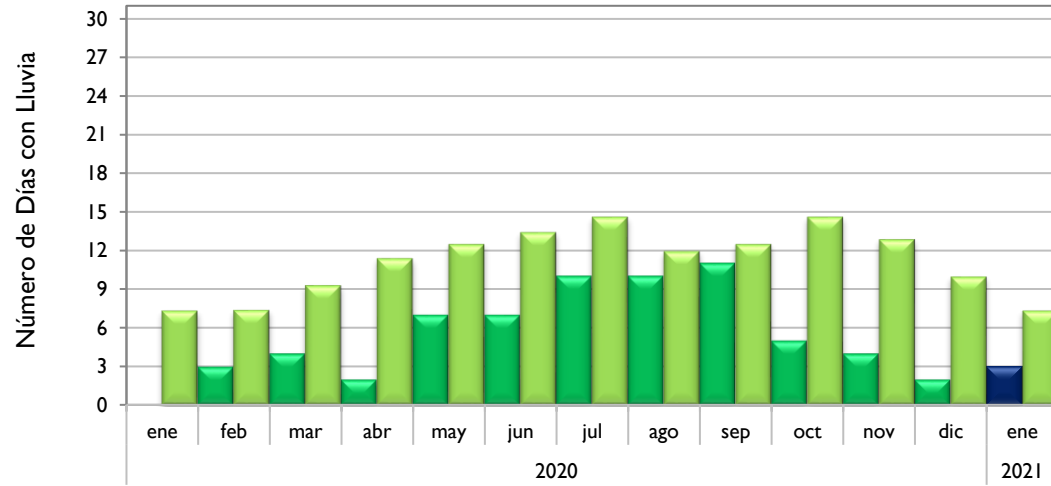
Neiva - Huila



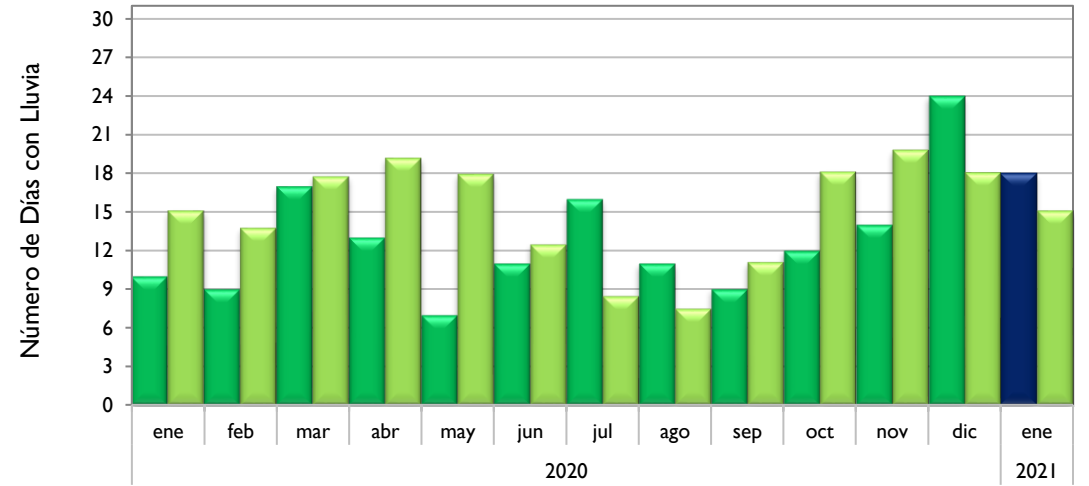
Palmira - Valle del Cauca



Cúcuta - Norte de Santander



Chachagüi - Nariño

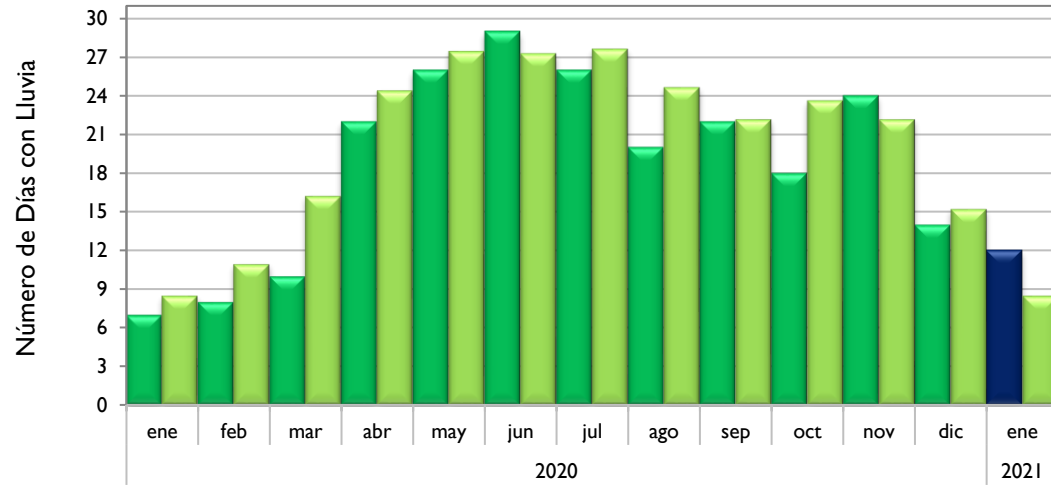


Observado 2020

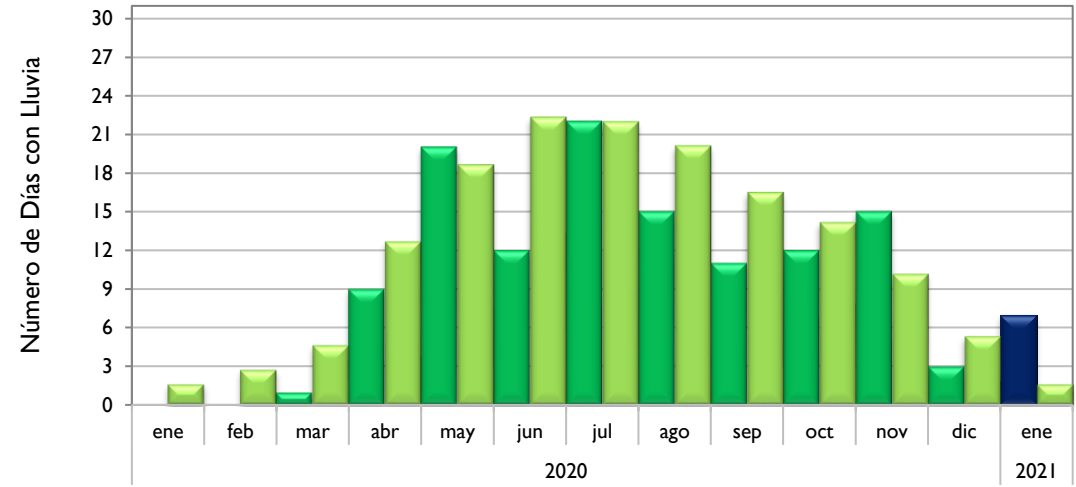
Observado 2021

Climatología

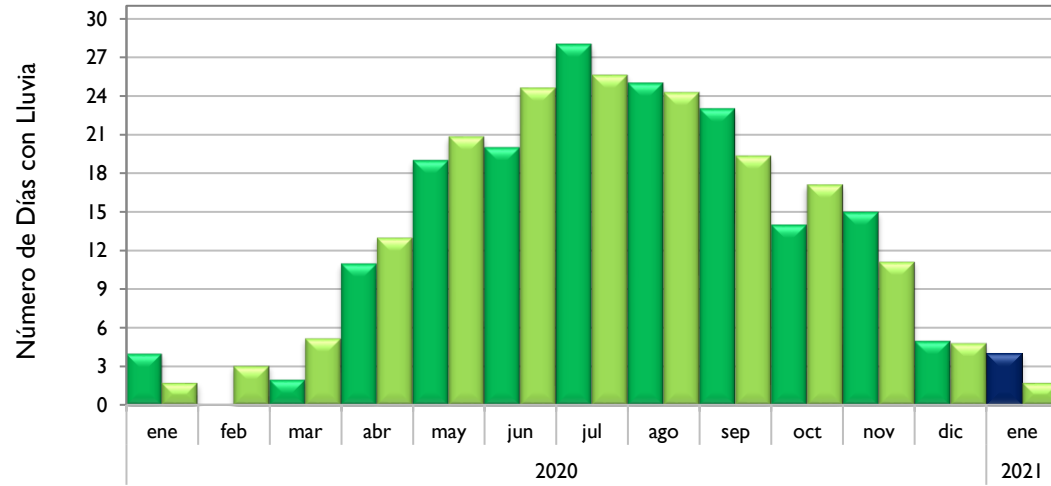
Villavicencio - Meta



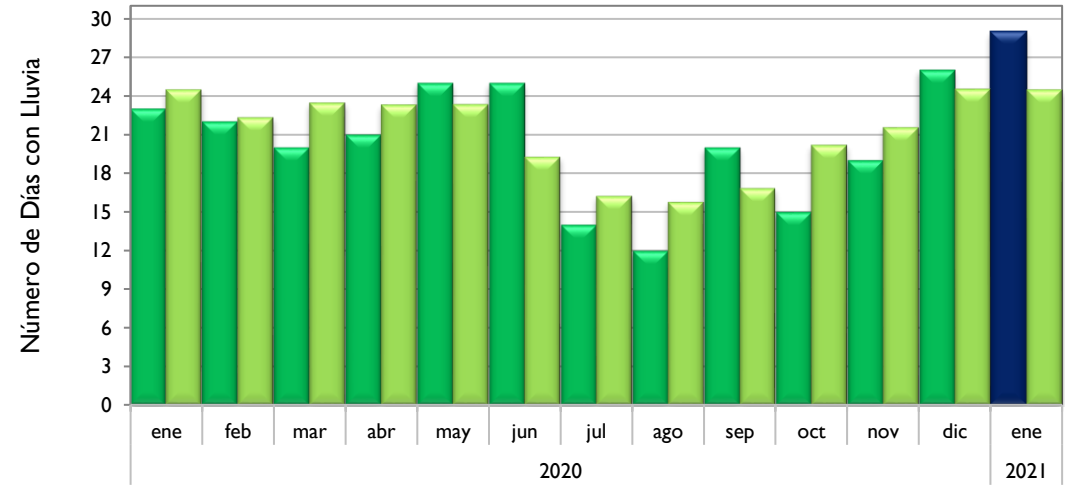
Arauca - Arauca



Puerto Carreño - Vichada



Leticia - Amazonas

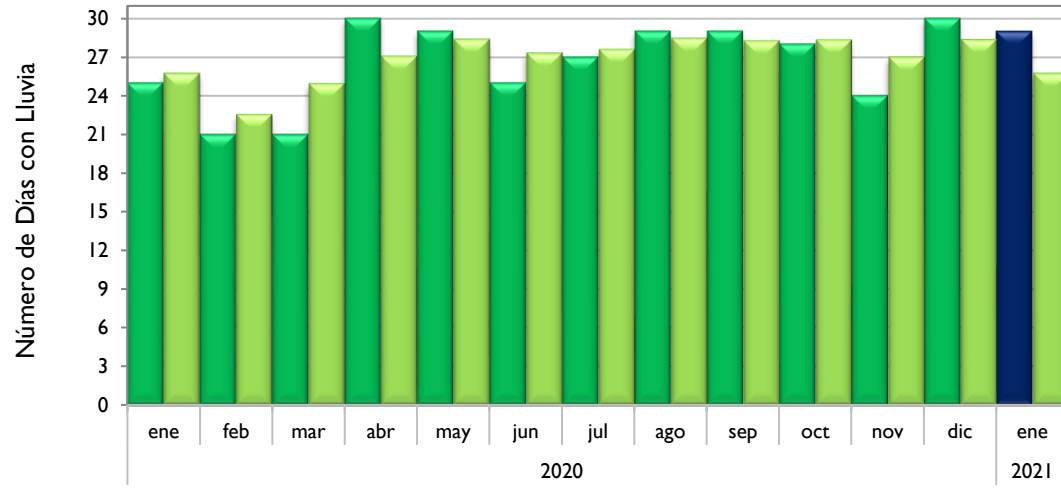


■ Observado 2020

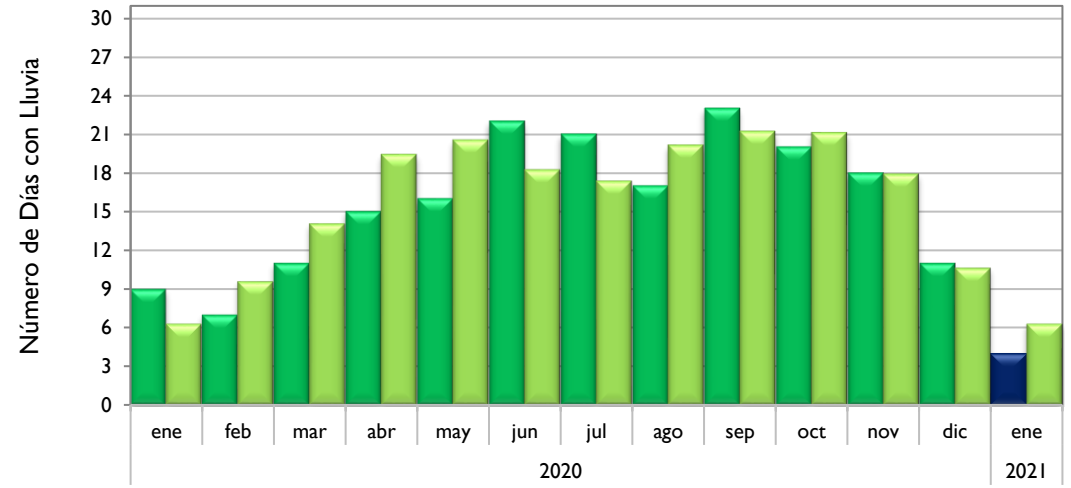
■ Observado 2021

■ Climatología

Quibdó - Chocó



Barrancabermeja - Santander



Armenia - Quindío

